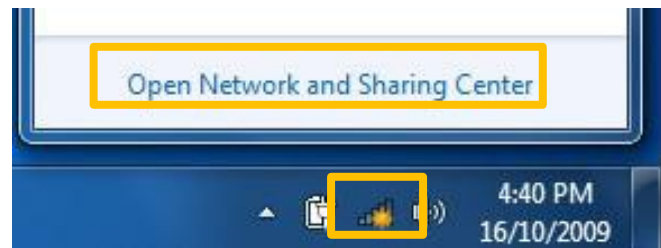


Windows 7 Wireless Setup Guide

This guide is for new connections to the UOW network.

Note: You must be in range of the UOW network to configure your device. A map of the wireless networks is available at <http://www.uow.edu.au/its/network/wireless/coverage-map/index.html>

1. Click on the networking icon and select
Open Network and Sharing Centre



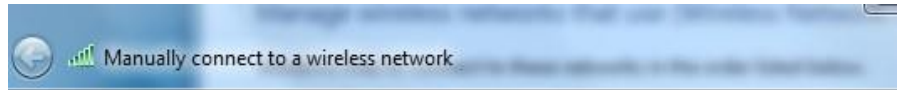
2. Click Manage wireless
Networks



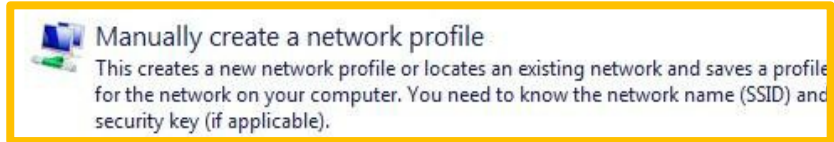
3. Click Add



4. Select **Manually create a network profile**



How do you want to add a network?



5. Enter the following details

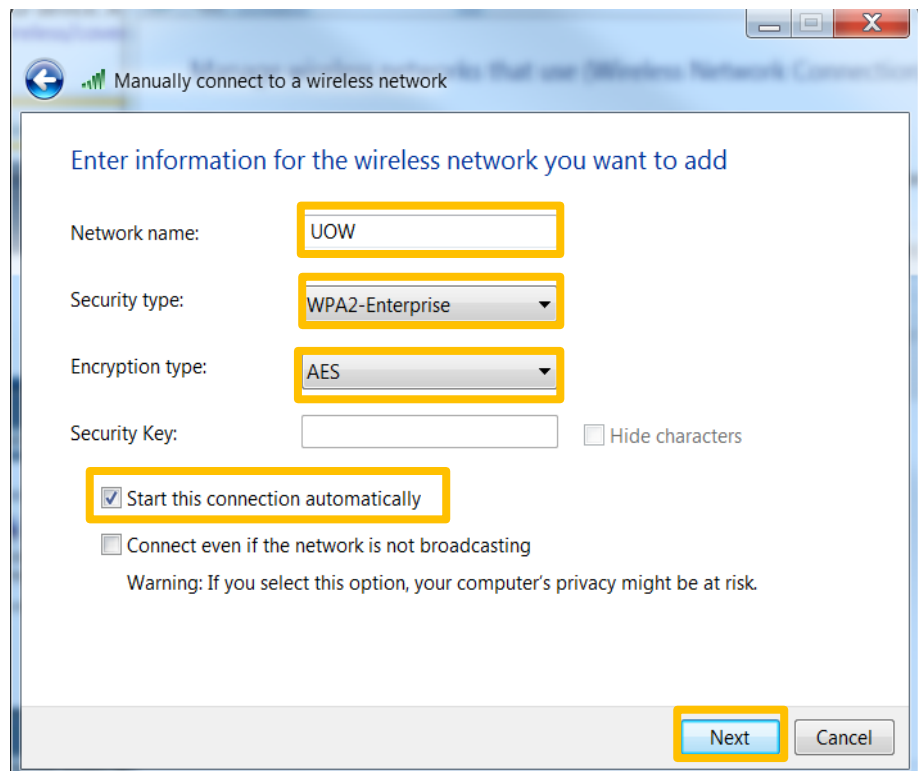
Network Name:
UOW

Security Type:
WPA2-Enterprise

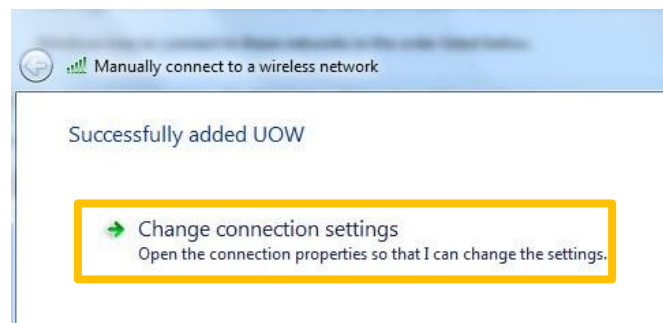
Encryption Type:
AES

6. **Tick Start this connection automatically**

7. **Click Next**



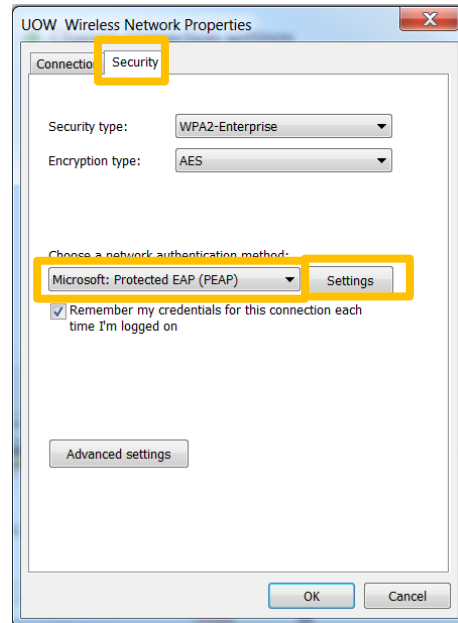
8. Click Change connection settings



9. Click the Security tab

10. Ensure that the network authentication method is set to **Microsoft: Protected EAP (PEAP)**

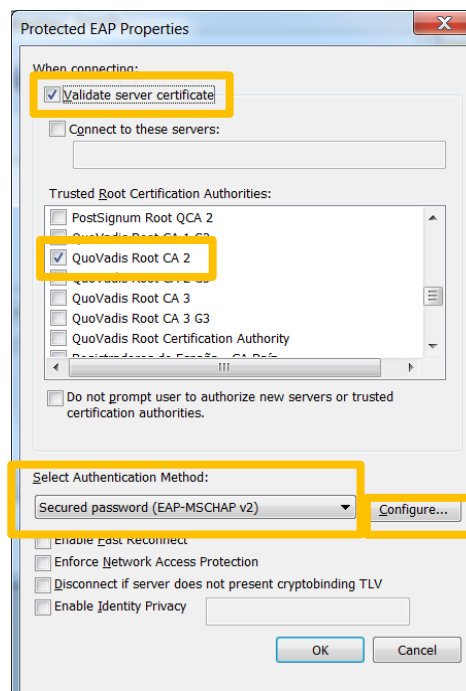
11. Click **Settings**



12. Select **Validate Server Certificate** and select **“QuoVadis Root CA 2”**

13. Ensure Authentication method is set to **Secured Password (EAP-MSCHAPv2)**

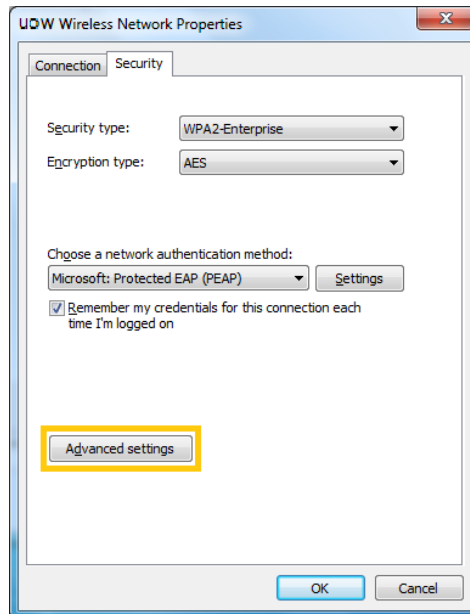
14. Click **Configure**



15. Deselect “Automatically use my windows logon name and password (and domain if any)”. Your device will not connect if this is selected.



16. Click **OK**

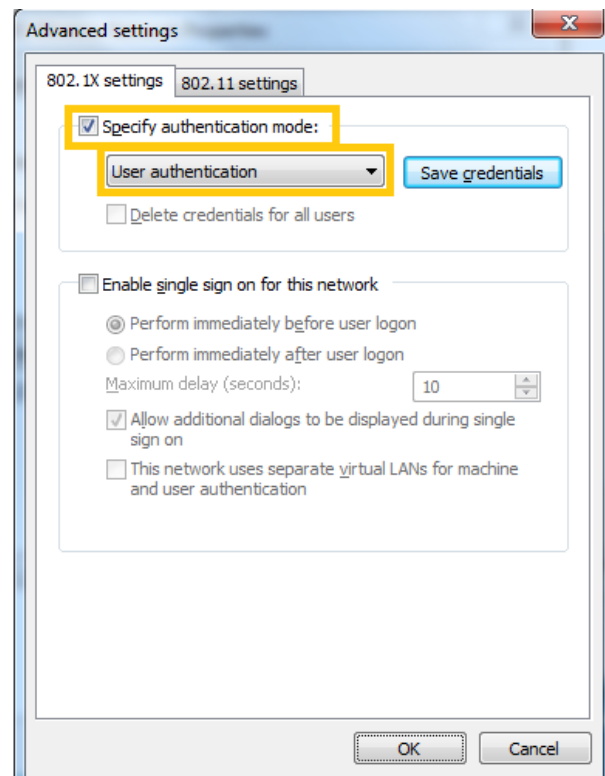


17. Click on “**Advanced settings**” Button.

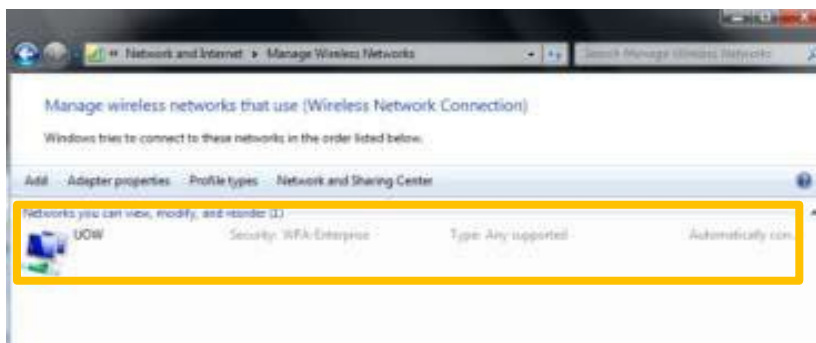
18. Ensure that “**Specify authentication mode:**” is selected.

From the Drop-down menu, choose “User Authentication”

Click **OK**

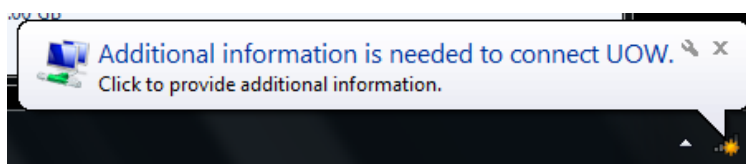


A UOW entry should now be listed under Manage Wireless Networks.



If the device is in range of the wireless network a bubble asking for Additional Information will appear.

1. Click on the bubble

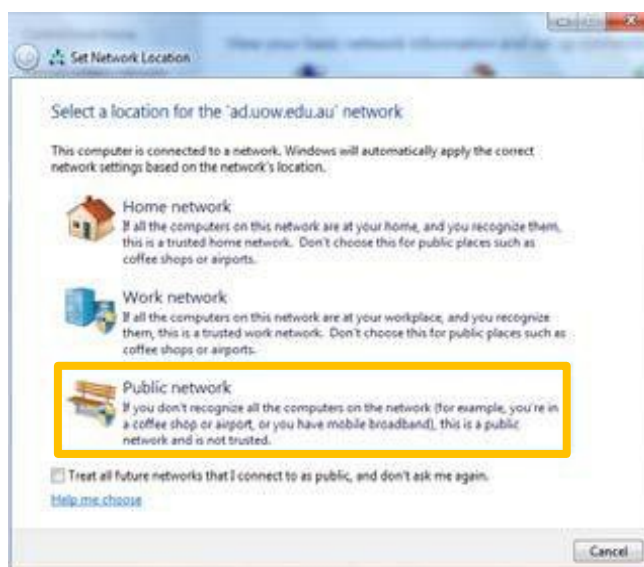


2. Enter your **University Username and Password** and click **OK**.
3. Select **Public Network**



You should now be connected to the network.

4. Click **Close**



For further assistance accessing the wireless network please see the Service Desk located at ITS Central Labs in Building 17, Level 1 or telephone 4239 2000