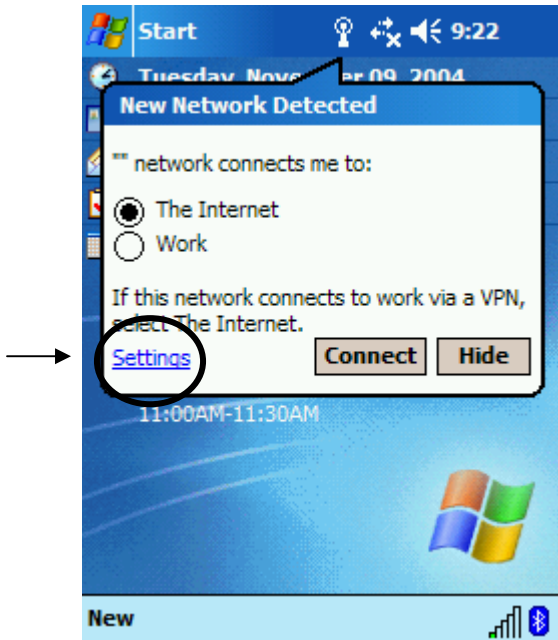


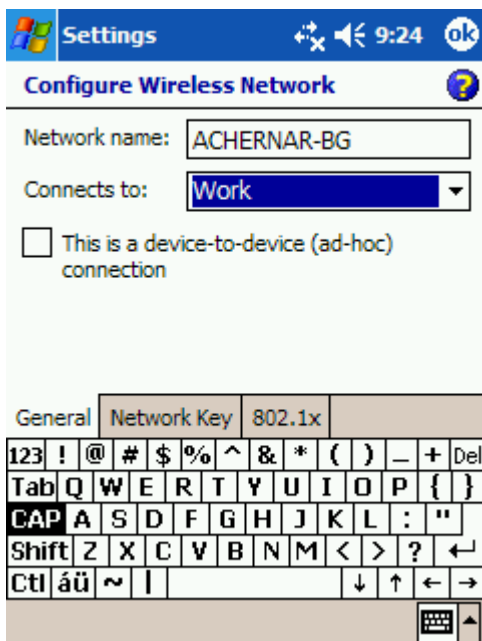
WIRELESS SETUP INSTRUCTIONS for PDA with built in WPA

Make sure date and time are correct on the PDA.
Push the wireless enable button. (usually bottom right)



Click on Settings

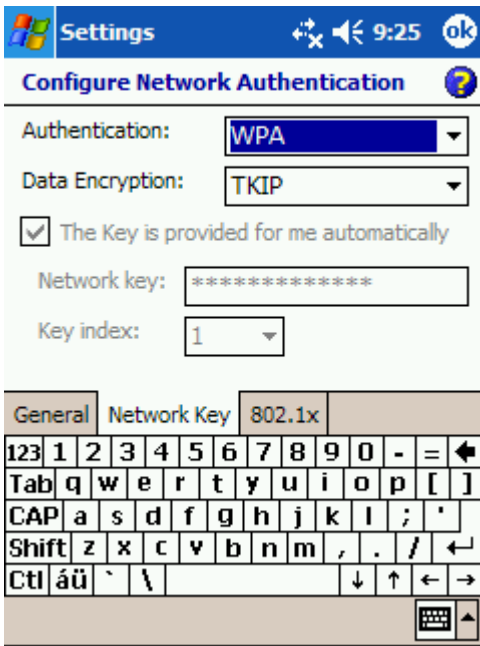
Next, click on Add New



Make sure the General tab above the keyboard is selected and
In the Network Name field
type: ACHERNAR-BG

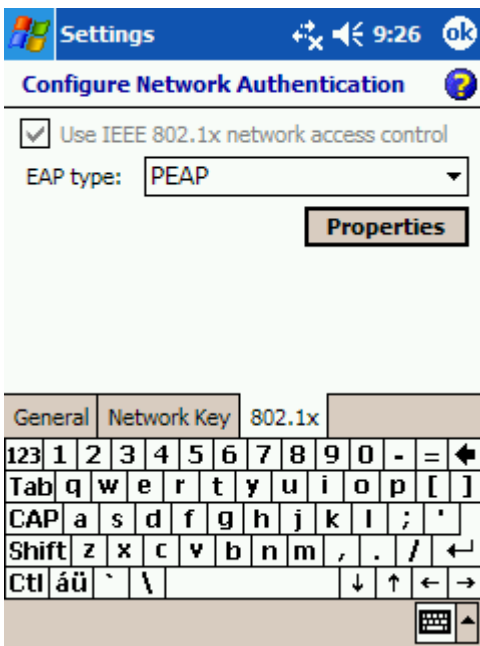
Connects to field should be Work
as shown.

Next, click on the Network Key tab



As shown at left, use the pull down menus so that
 Authentication field is WPA
 Date Encryption should be TKIP

Next, click on the 802.1x tab (just above keyboard)



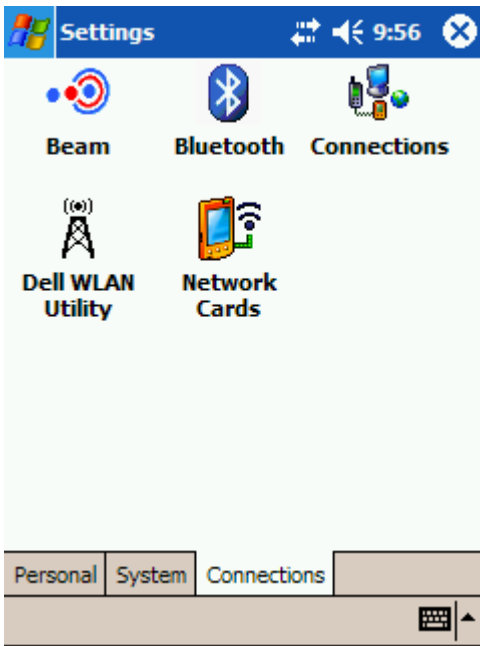
In the EAP type field, choose PEAP from the pull down menu.

Click OK at the top right of screen

Network log on should then pop up.

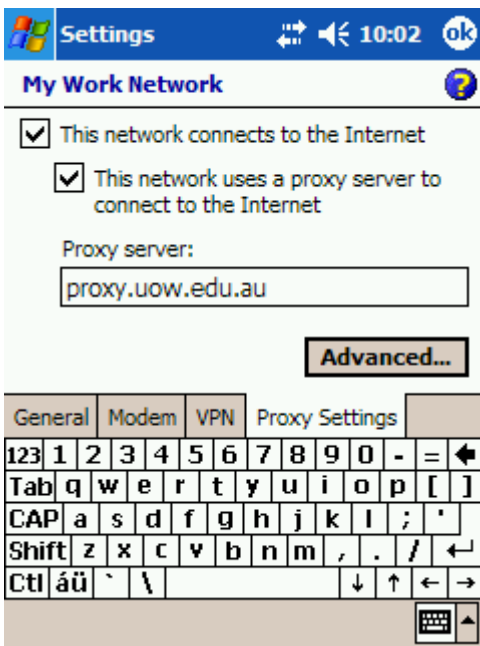
Type your user name and password and **save password**.

The reason for saving password is that there seems to be a bug or problem, with connecting if you do not save the password (settings will be lost and you will need to start over). However, please be aware that by saving your password this does present a security risk if your PDA is lost or stolen.



Go to Start and then click on Settings at top of the screen.

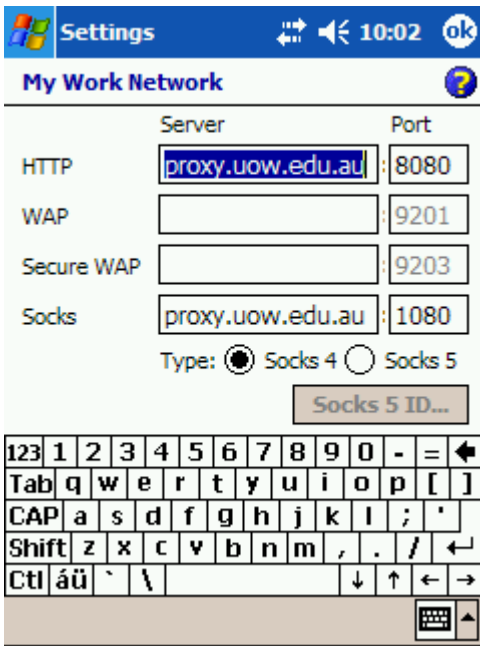
Next, click on Connections at bottom of screen, and then click Edit my proxy server.



Make sure both boxes at the top of screen are ticked.

Next,
Type in the proxy server as shown
proxy.uow.edu.au

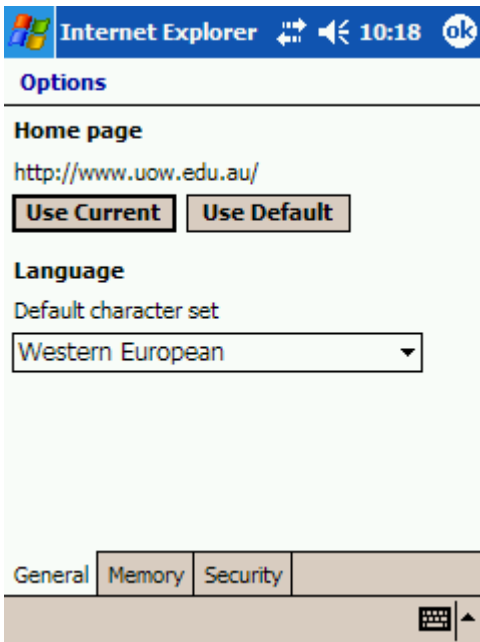
Next,
Tap the Advanced button



Next to proxy.uow.edu.au type 8080 as the Port as shown

Click OK and OK again.

Open Internet Explorer.



Type in the University of Wollongong homepage and tap enter to test.

Tap options at the bottom then tap the use current button to set the home page.

You can now browse the internet email using your wireless connection.