

CONFIGURING YOUR LAPTOP FOR WIRELESS USING IBM WIRELESS CARD

If you have the UOW Wireless CD, please ensure it is inserted into the CD-ROM drive. Alternatively download the IBM drivers from the UOW Wireless Download site – <http://www.uow.edu.au/its/wireless/support.html> - and unzip them into a location of your choice. Place the wireless card into the slot in your laptop. It will detect new hardware and the following window will appear.

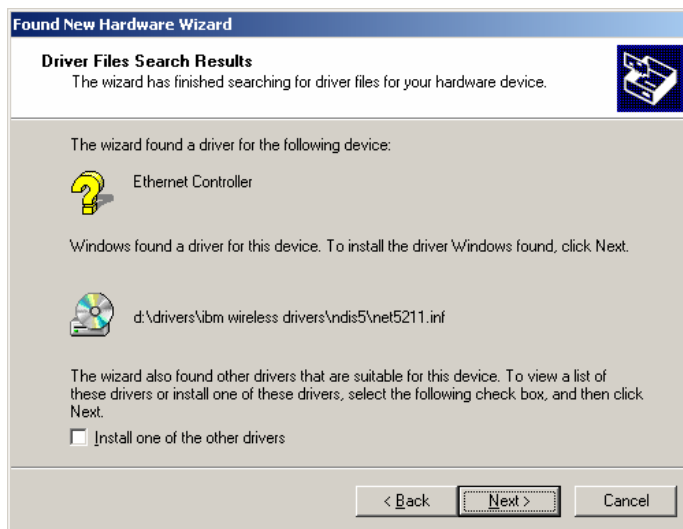
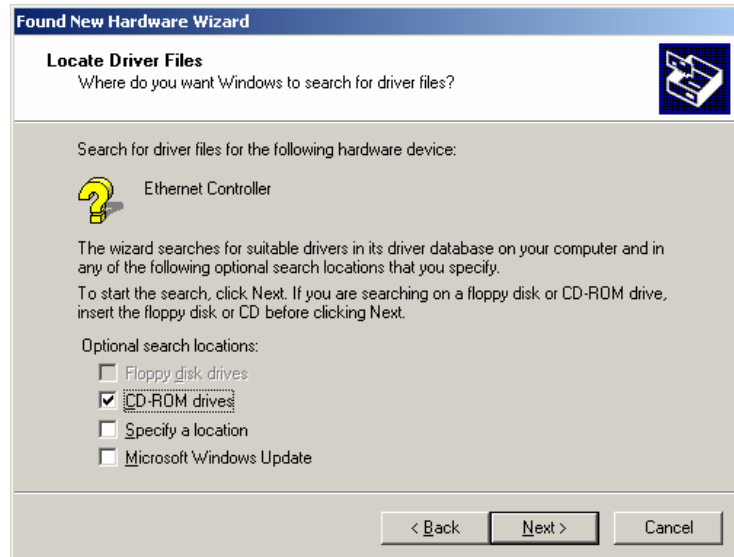
Click to select Install from a list or specific location (as shown) and then click Next



In the next window click Search for a suitable driver for my device (recommended) and then click Next

If you are using the UOW Wireless CD, make sure the CD-ROM is ticked. If you have downloaded the file then tick "Specify a location" and indicate where you have unzipped the files.

Click Next



Click Next



Note: this screen is specific to IBM a/b/g wireless card.

Click Finish

More information is available via the web at www.uow.edu.au/its/wireless

If you have any problems please contact the ITS Technical Support Team on 4221 3000 or visit the Enquiry Counter at the Student Computer Laboratories in Building 17.