

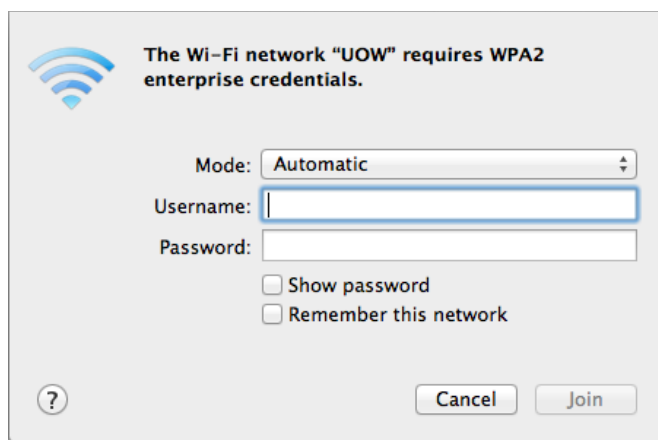


Mac OS X 10.7 Lion Wireless Setup Guide

1. Turn on airport
2. Select *UOW* from the list



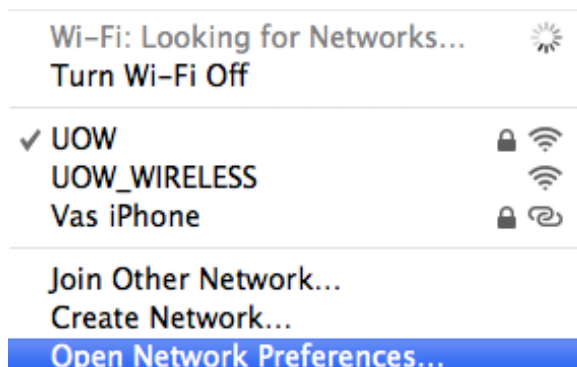
3. Enter username and password.
Leave everything else as default.



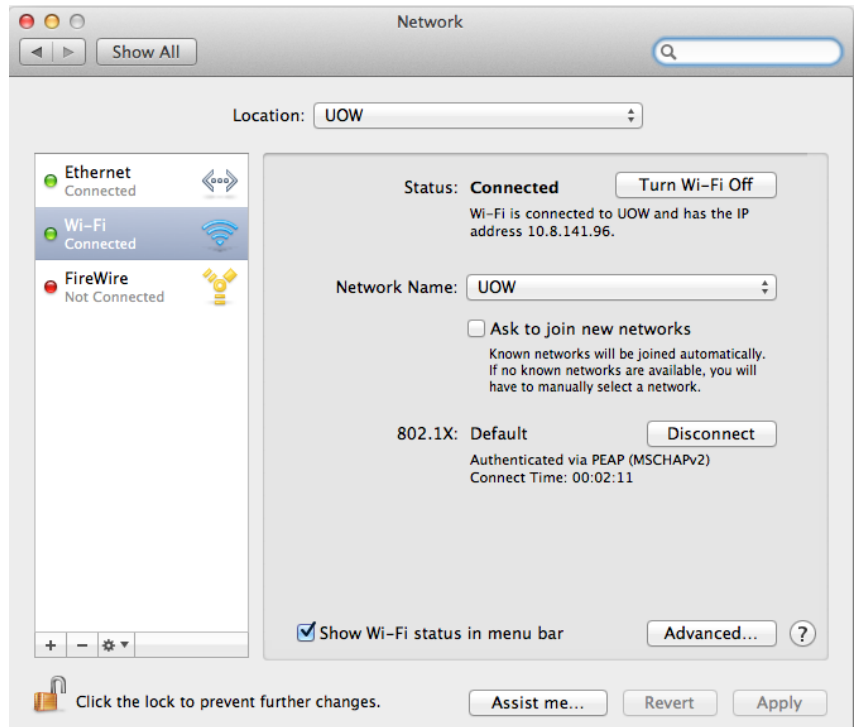
4. Click continue to “trust the certificate”. You may need to enter the *computer* username and password.



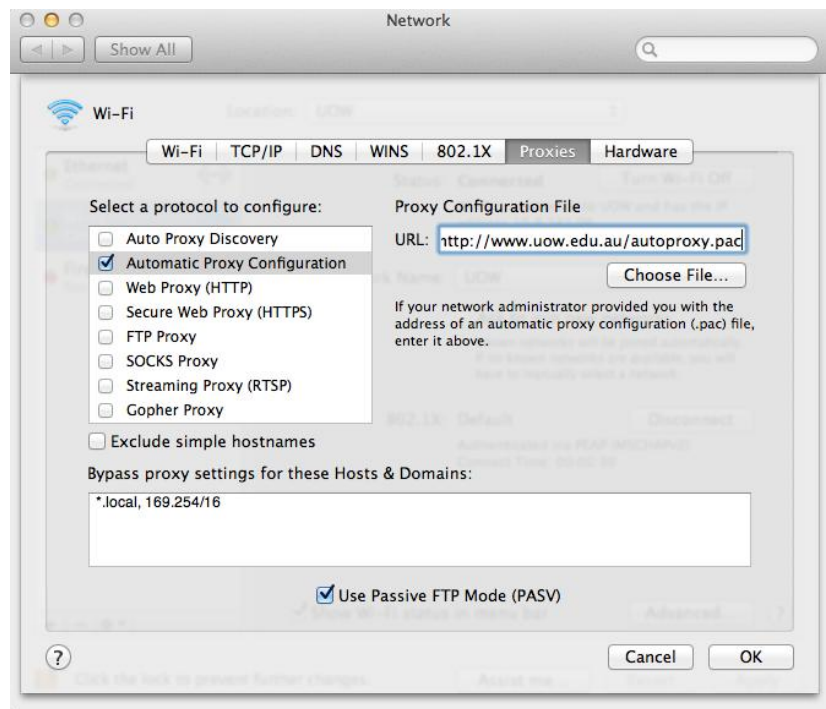
5. Select *Open Network Preferences* from the Wi-Fi menu



6. Click *advanced*



7. Click *Proxies* tick *Automatic Proxy Configuration* and press enter
<http://www.uow.edu.au/autoproxypac>



8. Click *OK* and then *Apply*