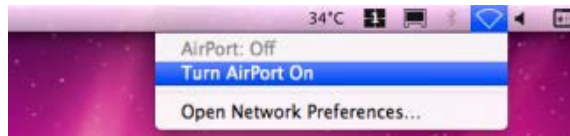


Mac OS 10.6 Wireless Setup Guide

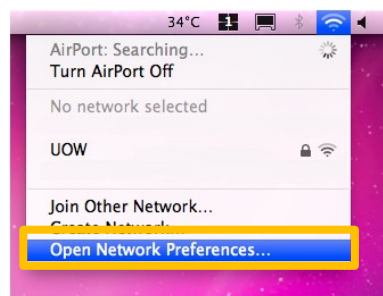
This guide is for new connections to the UOW

network. Note: You must be in range of the UOW network to configure your device. A map of the wireless networks is available at

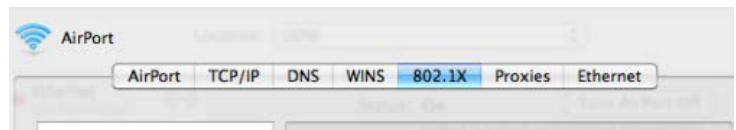
<http://www.uow.edu.au/its/network/wireless/coverage-map/index.html>



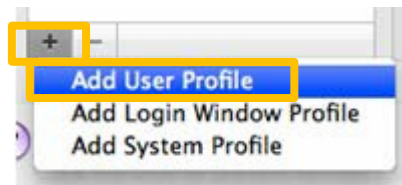
1. Turn on Airport
2. Select Open Network Preferences



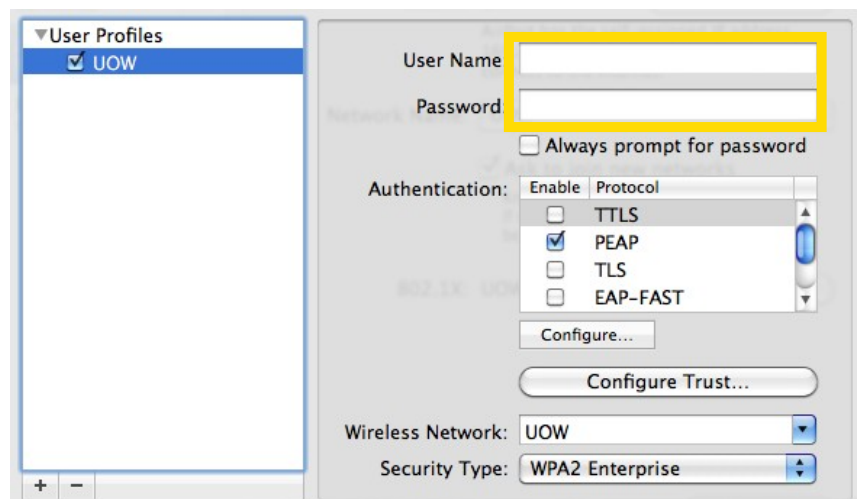
3. Open the Advanced... Menu and select the **802.1x** tab



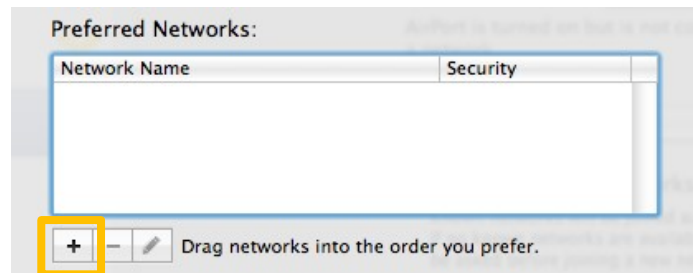
4. Select the '+' symbol
5. Select Add User Profile



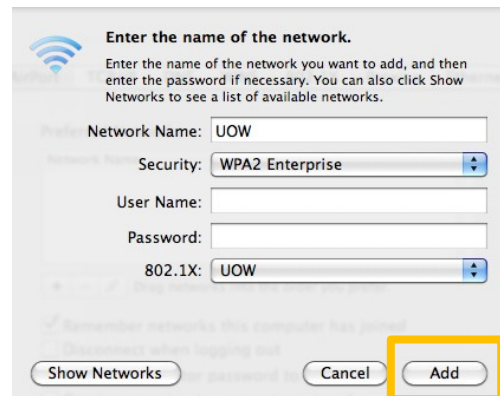
6. Set the user profile as shown and type in your **University user name and password** to connect to the network.



7. Click the Airport Tab
8. Click the '+' symbol to add a new network



9. Set the Network Name to **UOW**
10. Set Security to **WPA2 Enterprise**
11. Set 802.1x to the '**UOW**' user profile you created. This will automatically fill the username and password fields.
12. Click Add
13. Click OK and Apply the changes

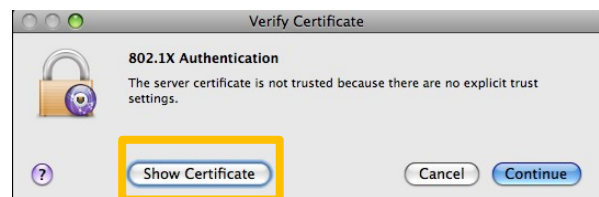


The first time you connect to the network the below dialog may appear

14. Click **Show Certificate** and **Always Trust**

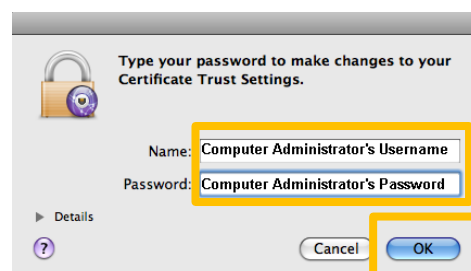
Please note that before accepting the certificate you should confirm that it contains the following details:

Certificate Name: wireless.uow.edu.au
 Issued by: QuoVadis Global



15. When prompted for a password to change your certificate trust settings enter the **computer administrator's password**.

16. Click OK



For further assistance accessing the wireless network please see the Service Desk located at ITS Central Labs in Building 17, Level 1 or telephone 4239 2000.