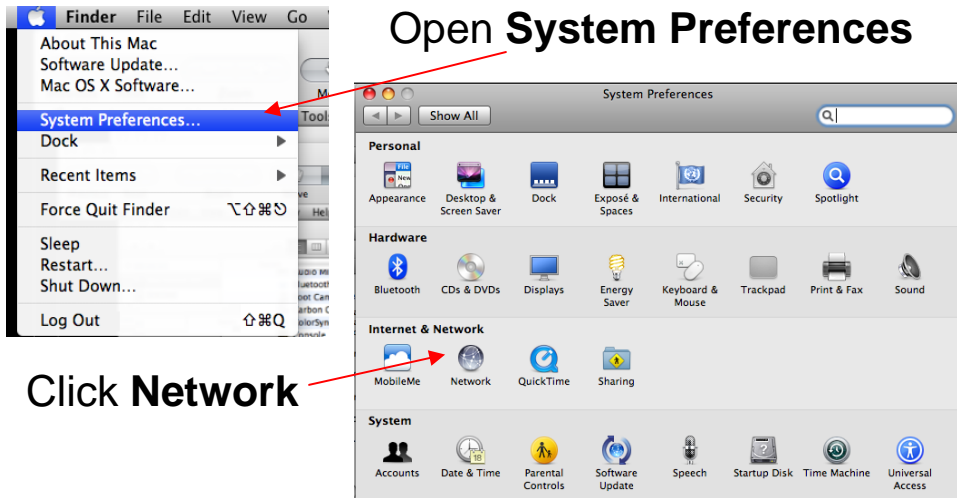
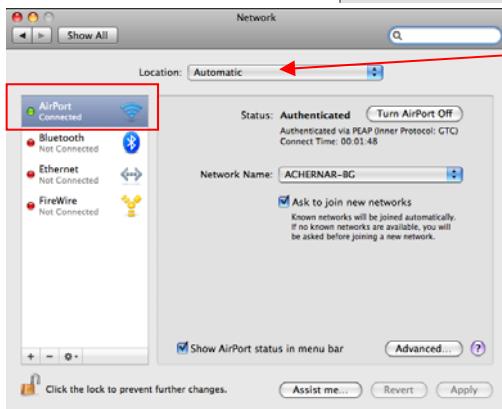


1 UOW Wireless Setup – Mac OS X 10.5



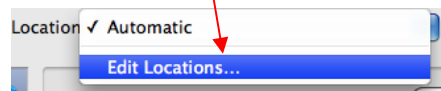
Open **System Preferences**

Click **Network**



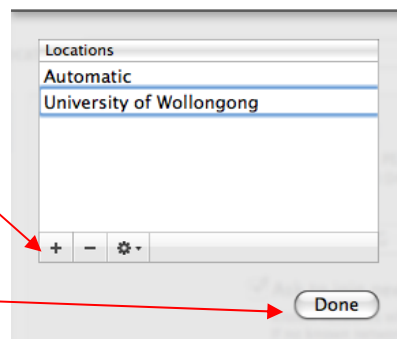
Click the **Location** field.

Click **Edit Locations**

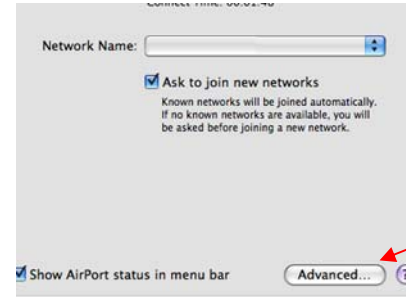


Click the plus to **add a new location** for your university settings.

Type in a name for the location. Click done.

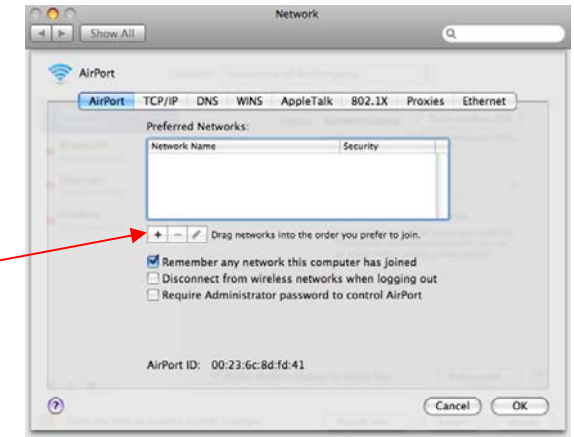


2



With the **UoW Location** selected, Select **Airport** and Click **Advanced**.

Add a new network by clicking the plus sign.



Network Name is **ACHERNAR-BG**.

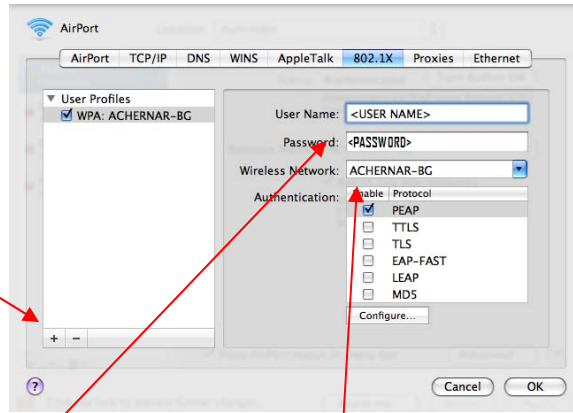
Security is **WPA Enterprise**.

Type in your university **username and password**.

Click **Add**.

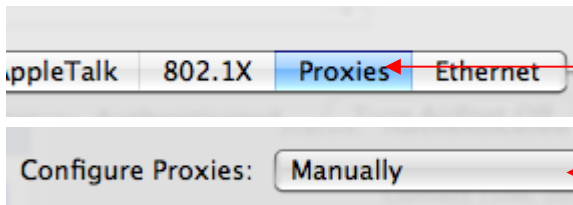
3

On the **802.1X** tab, under User Profiles Click the **Plus (+)** and **Add User Profile**



Enter your **University Username and Password**

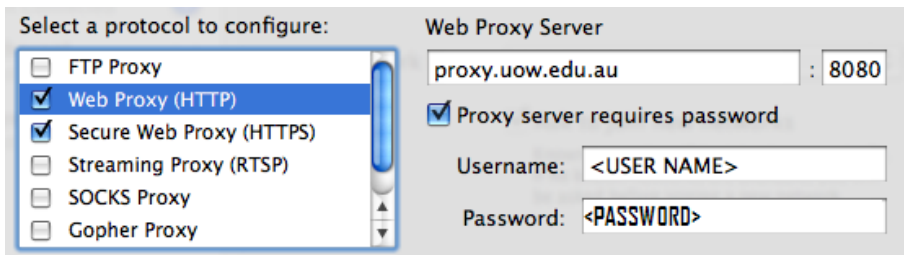
Type **ACHERNAR-BG** for **Wireless Network** and **Set Authentication to PEAP**. Only PEAP.



Open the **Proxies Tab**

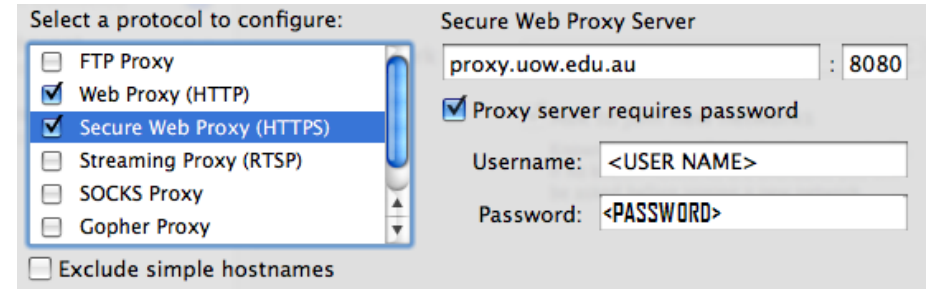
Set **Configure Proxies Manually**

Configure the Protocols as shown in figures A and B



A

4



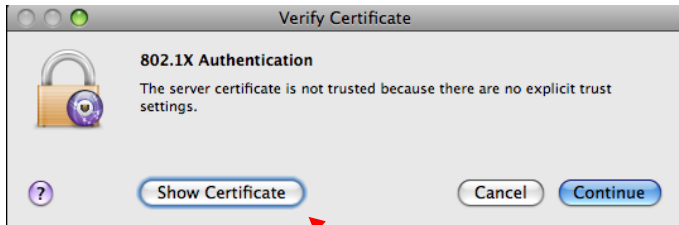
B

Ensure **Web Proxy (HTTP) AND Secure Web Proxy (HTTPS)** are configured or your web browsing may be severely impacted.

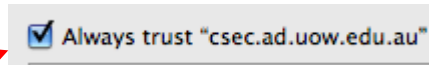
Apply the settings and turn Airport on/off if necessary.

When prompted enter your **University Username and Password**

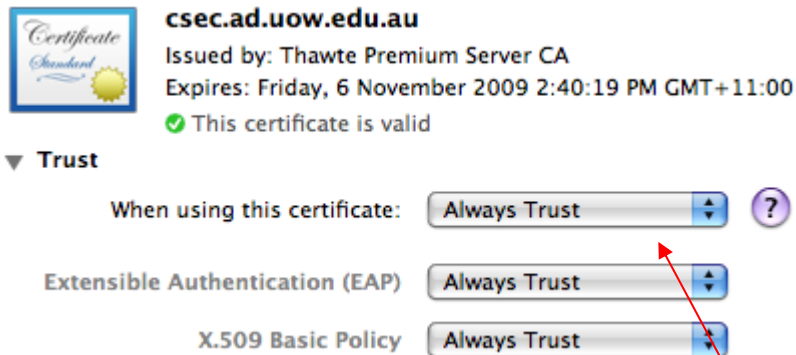




Click **Show Certificate**



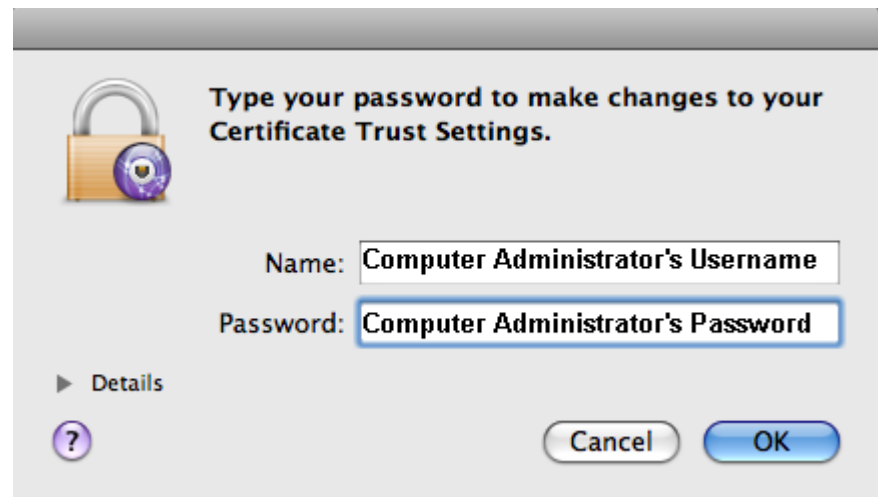
Tick **Always Trust**



Set When Using this Certificate to **Always Trust**

When prompted for a password to change your certificate trust settings enter the computer administrator's password.

This is typically the password used to log into the computer.



To use your university settings set the location to your university location.

Otherwise use Automatic.

