



## WIRELESS NETWORK SETUP FOR WINDOWS XP

Before using this guide you will need to answer yes to the following questions:

Does your laptop have a WPA compliant wireless card and driver installed?

You can check the list of compliant cards and drivers at <http://www.uow.edu.au/its/wireless/support.html>

Are you in an area that is covered by the University of Wollongong wireless network? Coverage map at <http://www.uow.edu.au/its/wireless/map.html>

Do you have access to the internet to download or have you already downloaded the appropriate software?

Instructions to set up Windows XP-SP2 WPA client for accessing wireless network within the University of Wollongong.

Note: your wireless card should be installed before completing these instructions. It must have updated drivers to support WPA encryption.

There are two wireless networks available to students. These networks have been named: ACHERNAR-A and ACHERNAR-BG.

ACHERNAR-A allows connection to the 802.11a network. This operates at a maximum speed of 54Mbps and is available within buildings only. Your wireless card needs to support 802.11a to access this network.

ACHERNAR-BG allows connection to the 802.11b/g wireless network. This operates at a maximum of 11Mbps for 802.11b network adapters and a maximum of 54Mbps for 802.11g adapters and is available inside and outside of buildings within buildings within the University grounds. Your wireless card needs to support 802.11b or 802.11g to access this network

**Important: Throughout these notes \*\* denotes settings for ACHERNAR-BG**

Go to the Start menu

Choose Control Panel

\*If in "classic view" choose Network Connections

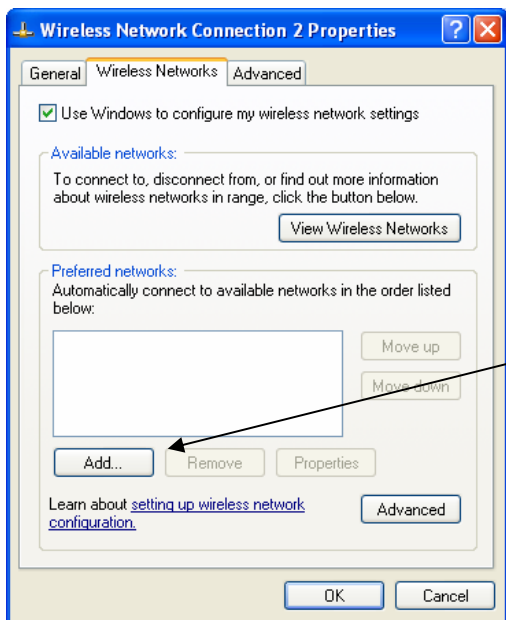
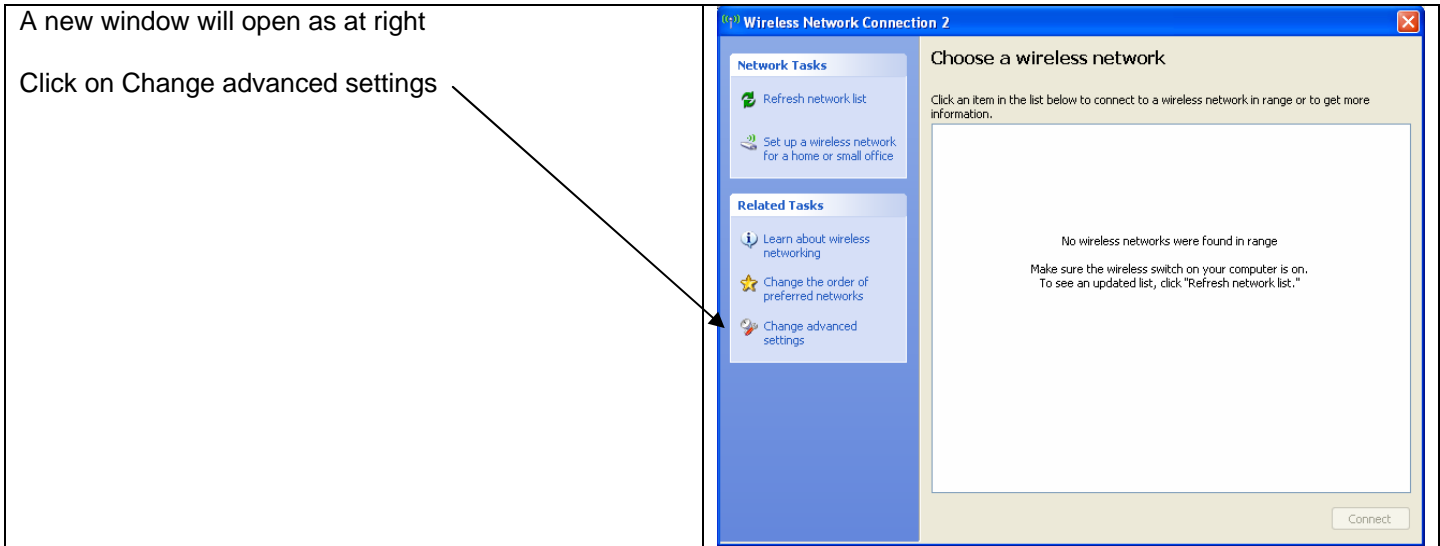
\*If in "category view", choose Network & Internet connections and then choose Network Connections.

### LAN or High-Speed Internet

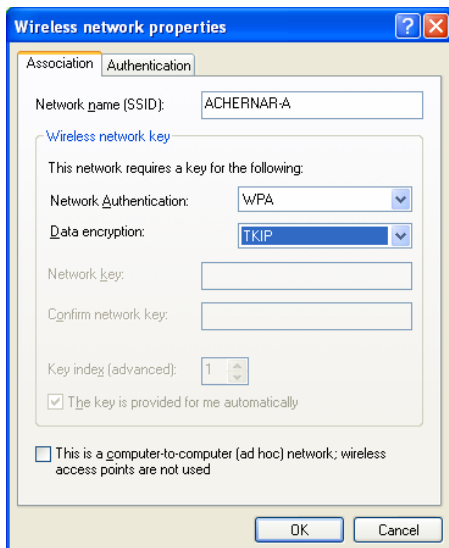


**Right click** on Wireless Network Connection icon **as shown at right**.

From the pull down menu, choose View Available Wireless Networks



In the window which now opens, click on Wireless Networks tab at top of window. Click the Add... button



Note: You must do the following in order as stated below

1 In **UPPERCASE**, Type ACHERNAR-A in field next to Network name (SSID)

**OR**

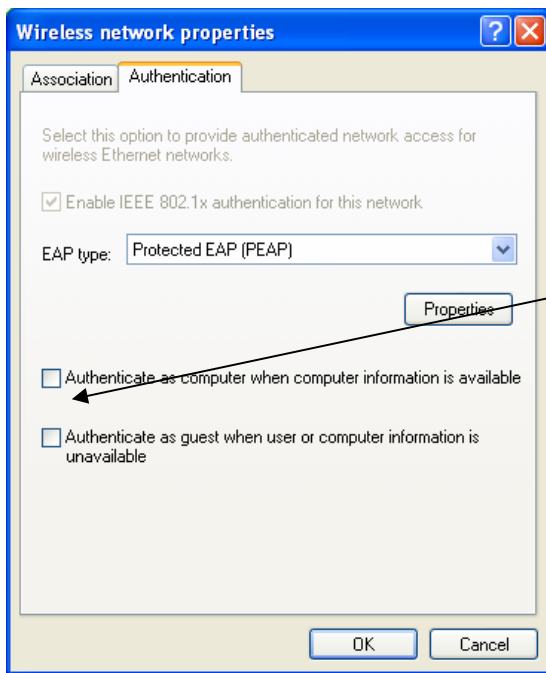
\*\*1 Type ACHERNAR-BG in field next to Network name (SSID)

2 Choose WPA from pull down menu next to Network Authentication

3 Choose TKIP from pull down menu next to Data encryption

**DO NOT CLICK OK**

Now click on **Authentication** tab at top of window



Ensure both checkboxes are UNchecked

From the pull down list next to EAP type choose Protected EAP (PEAP)

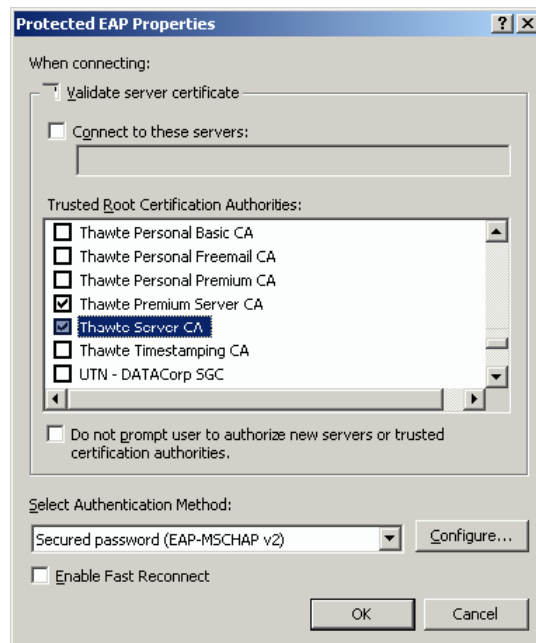
Then click on Properties button

Check the box next to Validate server certificate and make sure that the box next to "connect to these servers" is unchecked.

Scroll down and check Thawte Premium Server CA and Thawte Server CA - this needs to be done for security reasons

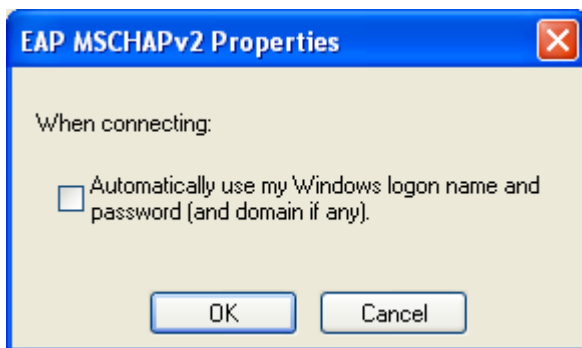
Make sure Secured password (EAP-MSCHAP v2) is selected from pull down menu under "Select Authentication Method"

Next, click Configure... button

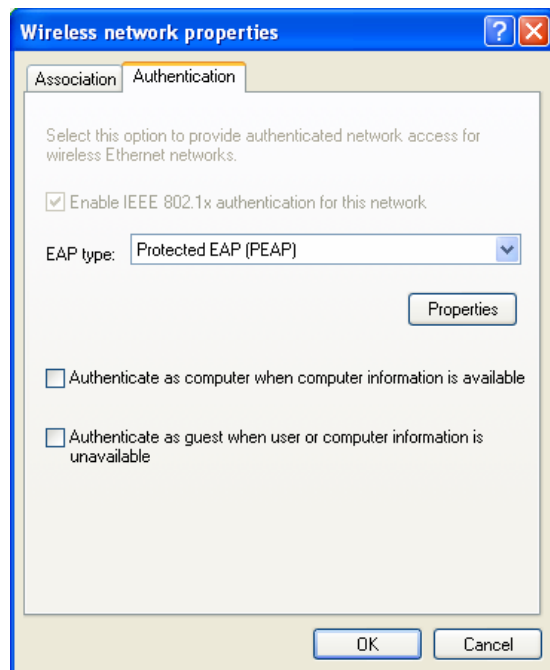
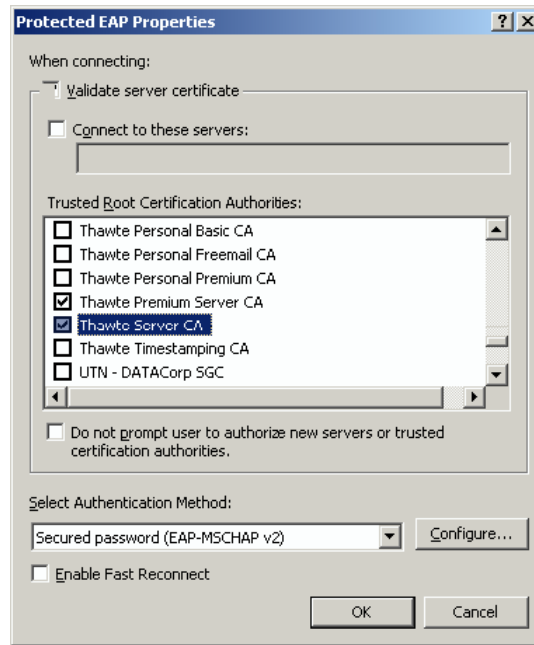


Uncheck the box next to automatically use my Windows logon name and password...

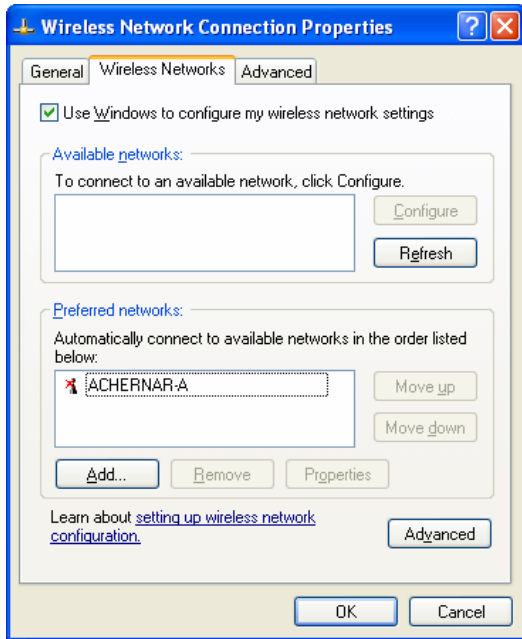
Next click OK



This window will appear again.  
Click OK



Click OK on this window



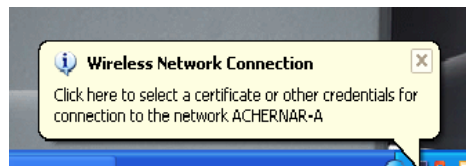
Check that ACHERNAR-A is showing in the box as shown in the window at left. This indicates that the ACHERNAR-A SSID has been setup and is ready for connection.

\*\*If you have chosen to connect to ACHERNAR-BG the box will indicate ACHERNAR-BG ....

Click OK

At this point you should Restart your computer.

When your computer restarts, if you are in an area covered by the appropriate wireless network, you will see this text bubble appearing on your Desktop. Double click on this text bubble and the following window will appear



\*\*\* If you have chosen to connect to ACHERNAR-BG the text will indicate ACHERNAR-BG



You need to fill in your SOLS user name and password (the same as your University of Wollongong email user name and password). Leave Logon Domain blank and then click OK

To check that Setup has been successful, you should now go to the Start menu on your computer and choose Control Panel and then choose Network connections.

You should now see the diagram at right and verify that "Connected" is showing under Wireless Network Connection 2

### LAN or High-Speed Internet



Set up of software is now complete.

### PROXY INFORMATION

Before you begin using your Wireless Network you should make sure your Proxy settings are correct.

#### For Netscape Communicator

Go to the Edit menu and choose Preferences  
Under the list of categories, open the Advanced folder and choose Proxies  
Type in the Automatic proxy as <http://www.uow.edu.au/autoproxy.pac>  
Click the Reload button.  
Click OK

#### For Internet Explorer

Go to the Tools menu and choose Internet Options  
Click on the Connections tab  
Click on LAN settings button (bottom right)  
Place a tick in the Use Automatic Configuration Script  
Type in <http://www.uow.edu.au/autoproxy.pac>  
Click OK and then OK again

If your browser does not support automatic configuration, the following information is supplied:

FTP Proxy	<a href="http://proxy.uow.edu.au">proxy.uow.edu.au</a>	Port: 8080
Gopher Proxy	<a href="http://proxy.uow.edu.au">proxy.uow.edu.au</a>	Port: 8080
http Proxy	<a href="http://proxy.uow.edu.au">proxy.uow.edu.au</a>	Port: 8080
SOCKS host		Port: 8080

More information is available via the web at [www.uow.edu.au/its/wireless](http://www.uow.edu.au/its/wireless)

If you have any problems please contact the ITS Technical Support Team on 4221 3000 or visit the Enquiry Counter at the Student Computer Laboratories in Building 17.