



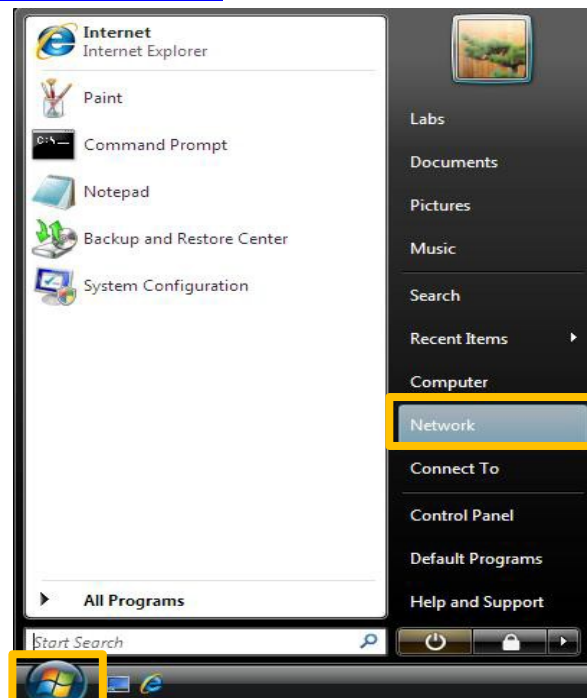
# Windows Vista Wireless Setup Guide

This guide is for new connections to the UOW network.

**Note:** You must be in range of the UOW network to configure your device. A map of the wireless networks is available at

<http://www.uow.edu.au/its/network/wireless/coverage-map/index.html>

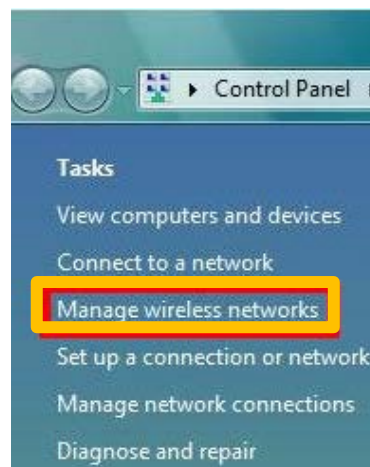
1. Open the **Start Menu**
2. Click on **Network**



3. Click on **Network and Sharing Centre**



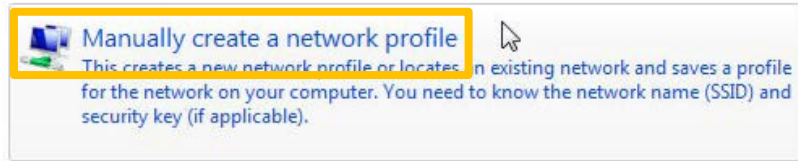
4. Click on **Manage Wireless Networks**



5. Click **Add**



6. Click **Manually Create a Network Profile**

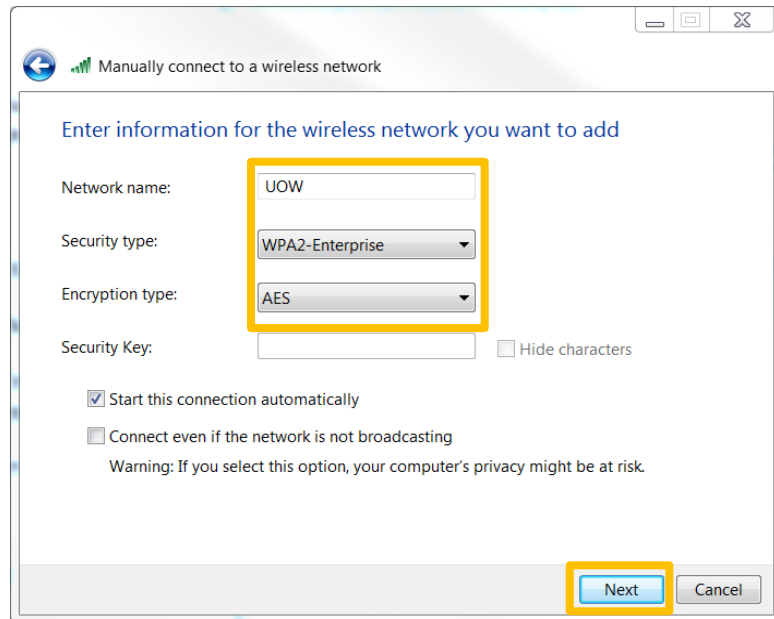


7. Fill in the fields as shown:

Network Name: UOW

Security Type: Select:  
WPA2- Enterprise

Encryption Type: Select: AES

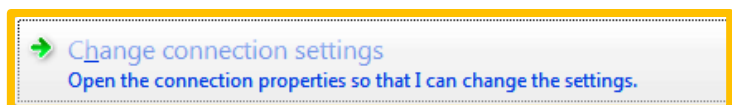


8. Click Next

Successfully added UOW

9. Click **Change connection settings**

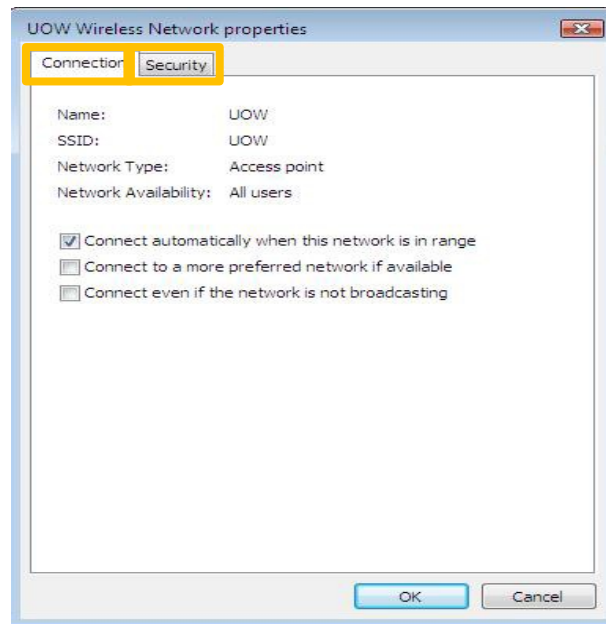
→ **Connect to...**  
Open the "Connect to a network" dialog so I can connect.



10. Click the Connection Tab
11. Tick **Connect automatically when this network is in range**

**DO NOT CLICK OK**

12. Click the **Security Tab**



13. Select the following options to fill in these fields:

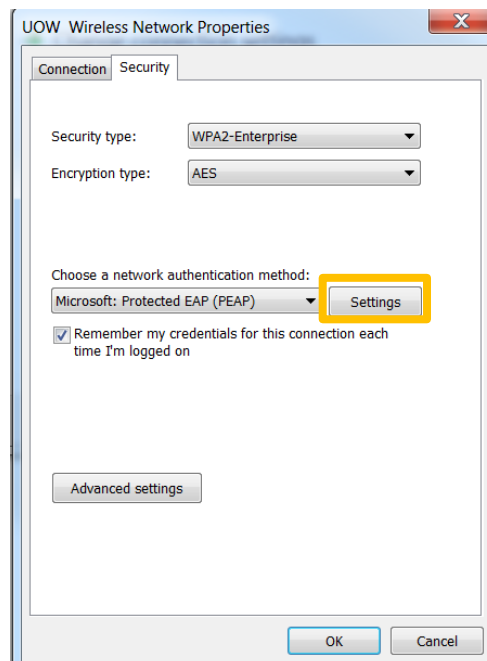
Security Type: **WPA2-Enterprise**

Encryption Type: **AES**

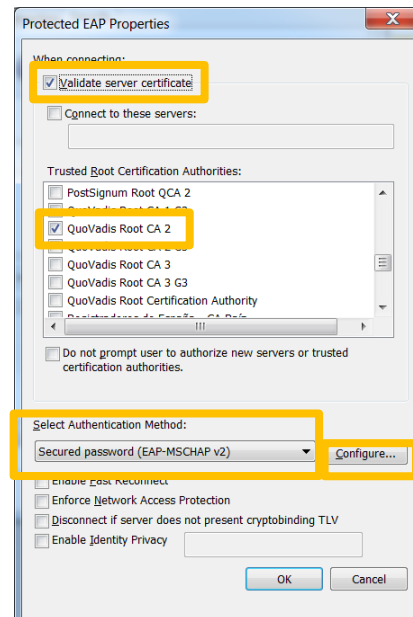
14. For authentication method :

Authentication: **Protected EAP (PEAP)**

15. Click **Settings**



16. **Select** Validate Server Certificate and select “QuoVadis Root CA 2”
17. Set Authentication Method to **Secured Password (EAP-MSCHAPv2)**
18. Click **Configure**

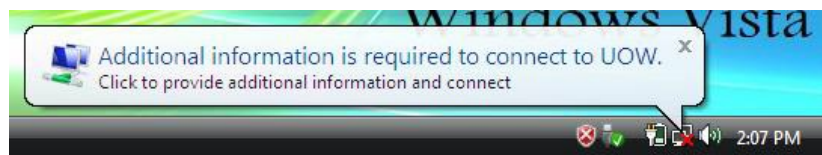


19. **Deselect** the “automatically use my windows logon name”
20. Click OK as you go through all of the open dialog boxes.



If in range of the network a bubble will appear in the bottom right hand corner.

21. Click this **bubble** on the bottom right of the screen.



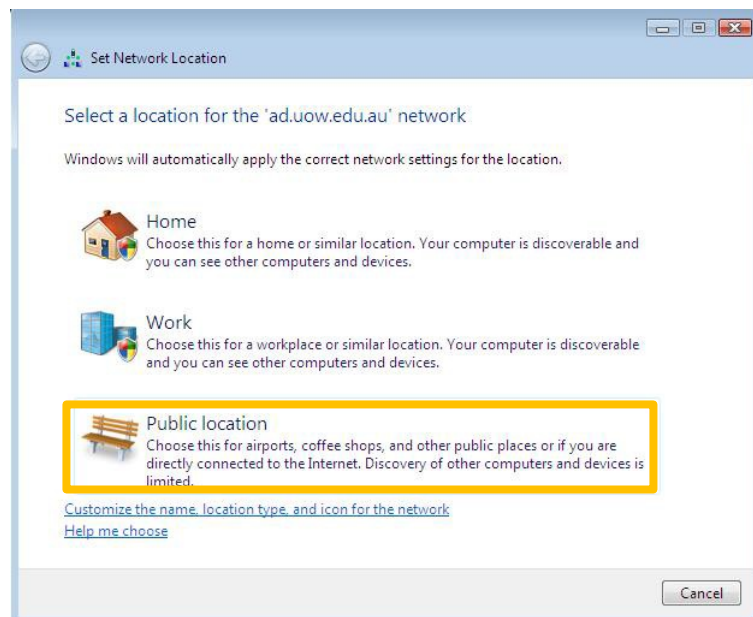
22. Enter your university username and password then Click OK.

**Leave Login Domain field Blank**

23. Click OK



24. Select **Public** Location



For further assistance accessing the wireless network please see the Service Desk located at ITS Central Labs in Building 17, Level One or telephone 4239 2000