

## Configuring a Dial-Up Connection for Windows XP

The following gives details on how to create a Dial-Up Connection, which you can use to connect to the University of Wollongong. Your connection will include the modem that will be used for the connection and the phone number you will be dialing into. Below is a list of lines that are available to you.

### Modem Numbers

#### Wollongong area

(02) 4226 7300 (56K line,V.90) PPP (IP & Appletalk access)  
(02) 4221 3299 (33.6K line) PPP & Terminal Access

#### Sydney area

(02) 8394 4700 (56K line,V.90) PPP

#### Nowra area

(02) 4423 7788 (56K line. V90) PPP

#### Batemans Bay Campus

(02) 4472 9844 (33.6K line) PPP & Terminal Access

#### Bega Campus

(02) 6492 5858 (33.6K line) PPP & Terminal Access

#### Moss Vale area

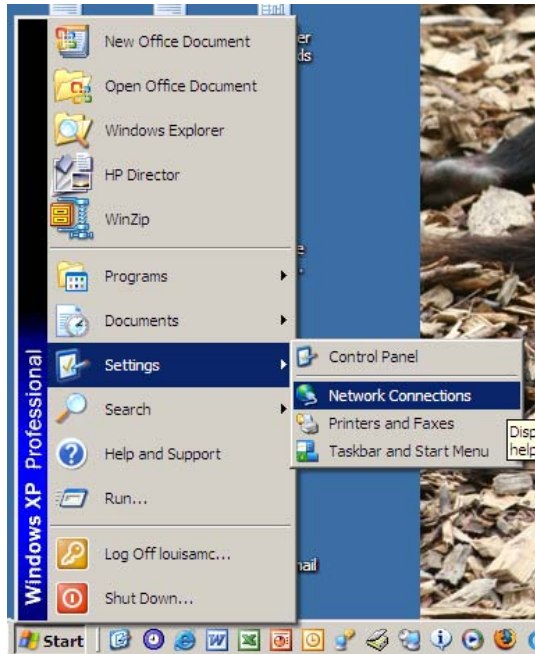
(02) 4869 5555 (56K line,V.90 and K56Flex) PPP

**Please Note:** *You will require a valid Unix/Email account to be able to establish a successful connection. To get a Unix/Email account please obtain a form at the enquiries desk on the 1<sup>st</sup> floor of the IT Resource Centre (Building 17) or alternatively visit the following web address.*

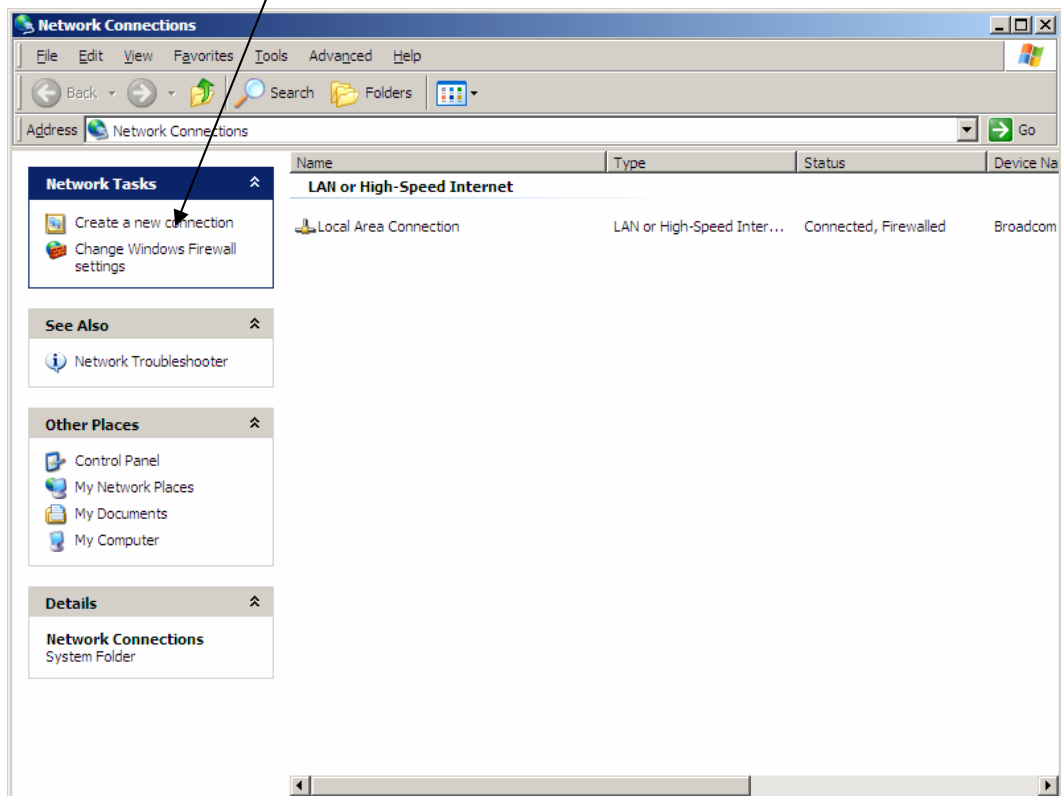
<http://www.uow.edu.au/its/userguides/forms/staff.html>

**Connection is limited to three hours after which you may try reconnecting.**

1. Click on **Start, Settings, Network Connections**.



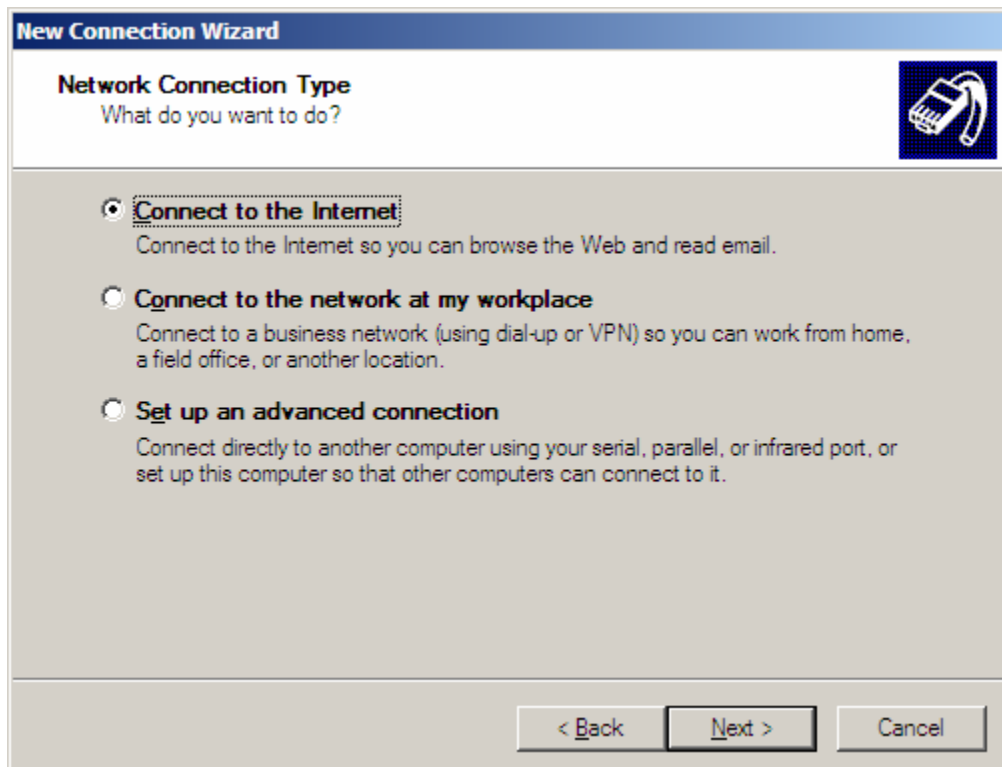
2. Select **Create new Connection**



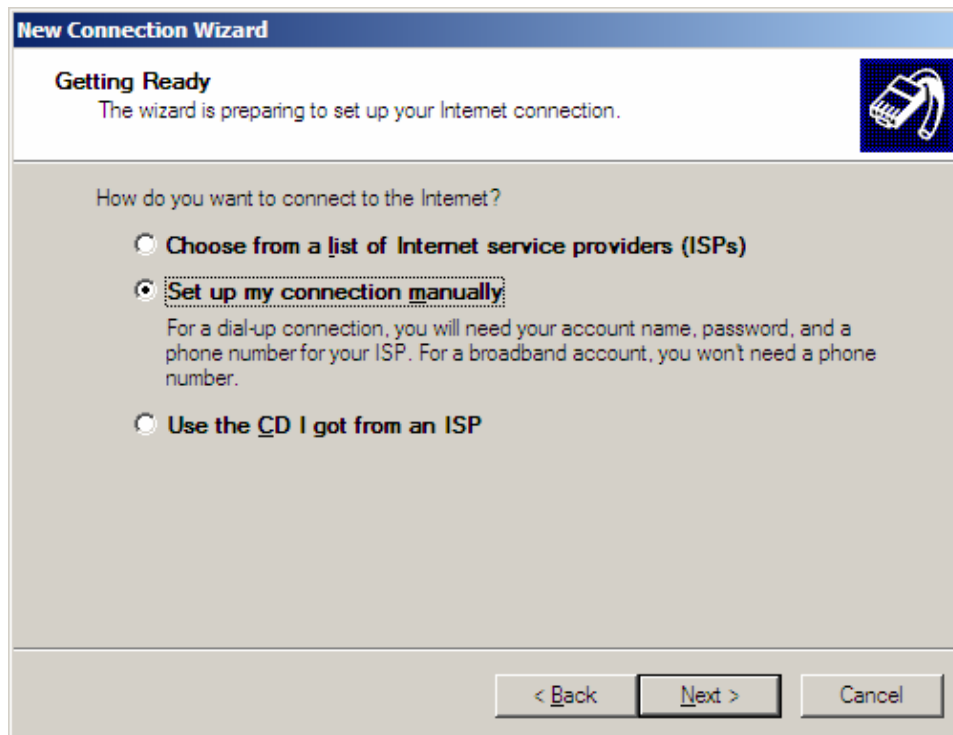
3. Click **Next**



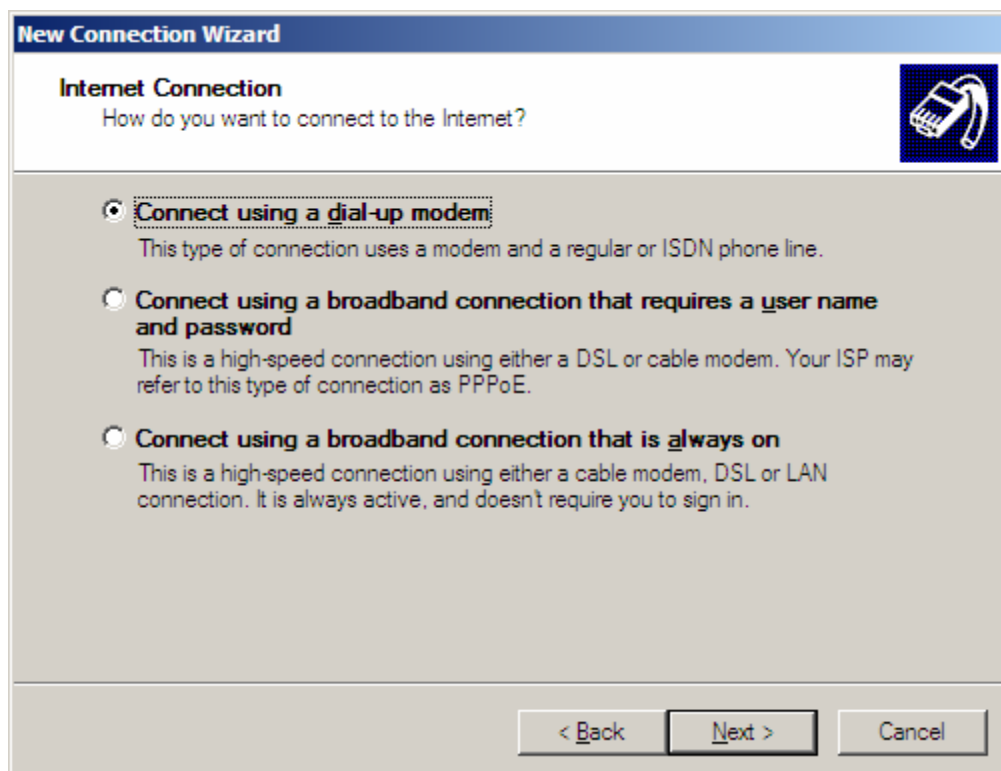
4. Choose the **Connect to the Internet** option then click **Next**.



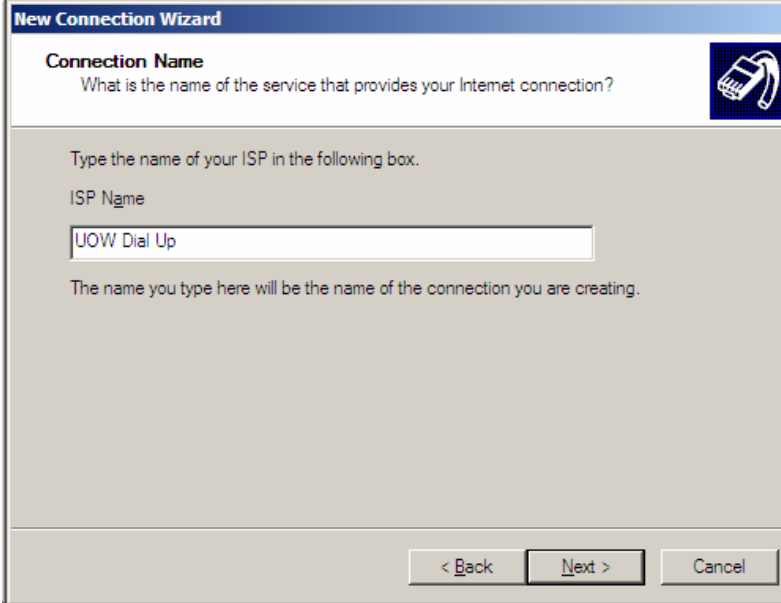
5. Select the option to **Set up my connection manually**.



6. Select the option to **Connect using a dial-up modem** then click Next.



7. Give the connection a name then click **Next**.



**New Connection Wizard**

**Connection Name**  
What is the name of the service that provides your Internet connection?

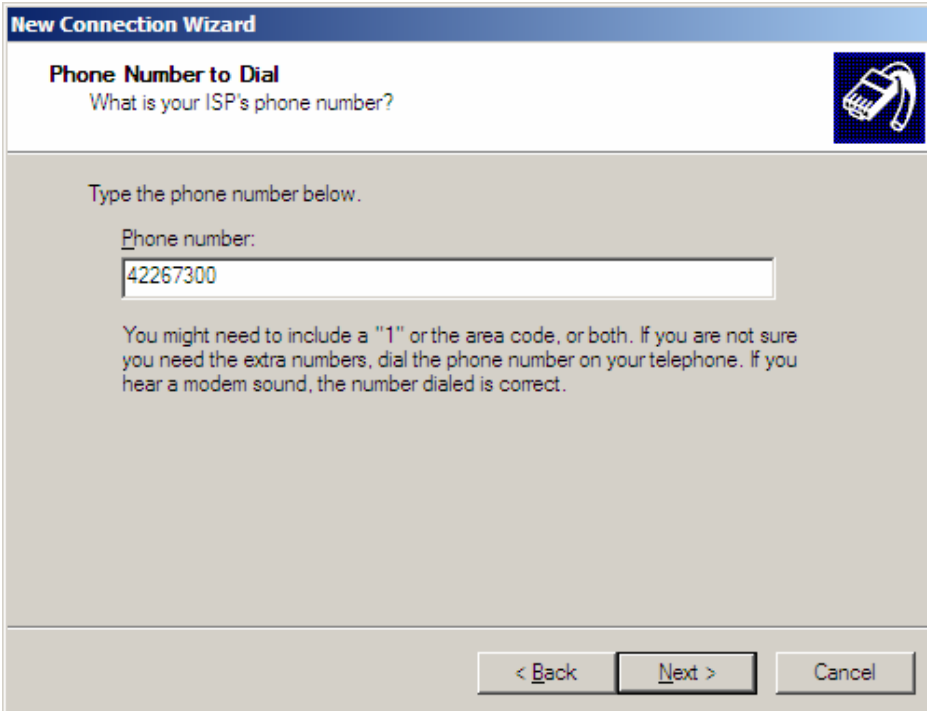
Type the name of your ISP in the following box.

ISP Name

The name you type here will be the name of the connection you are creating.

< Back   Next >   Cancel

8. Type the phone number of the area you wish to connect through and then click **Next**.



**New Connection Wizard**

**Phone Number to Dial**  
What is your ISP's phone number?

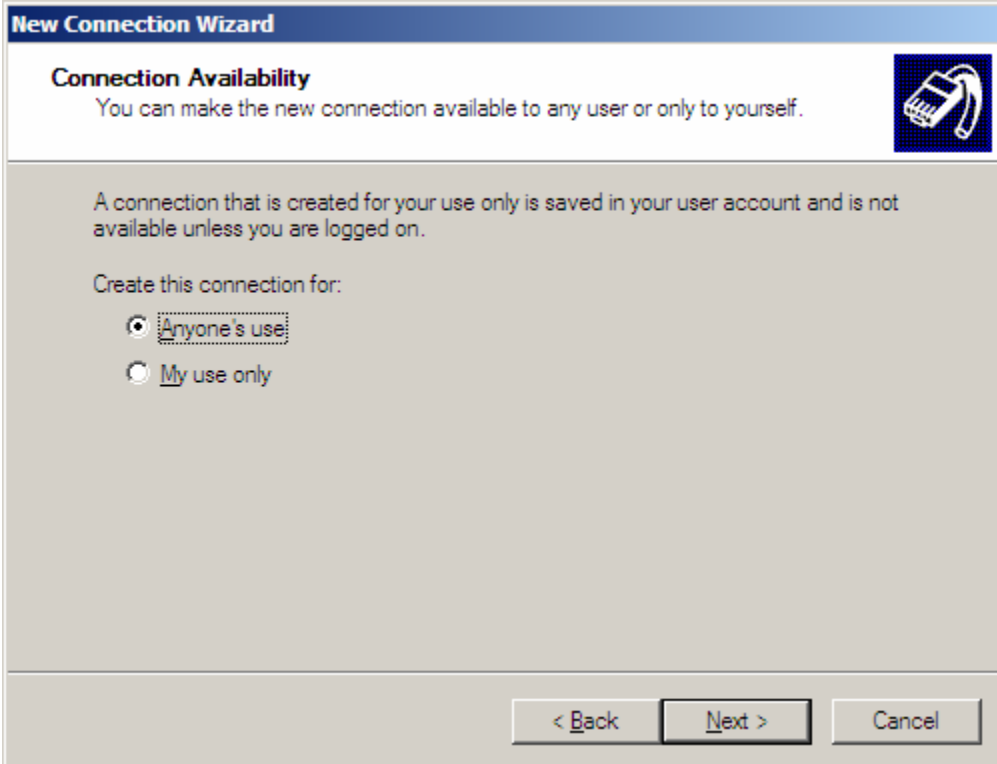
Type the phone number below.

Phone number:

You might need to include a "1" or the area code, or both. If you are not sure you need the extra numbers, dial the phone number on your telephone. If you hear a modem sound, the number dialed is correct.

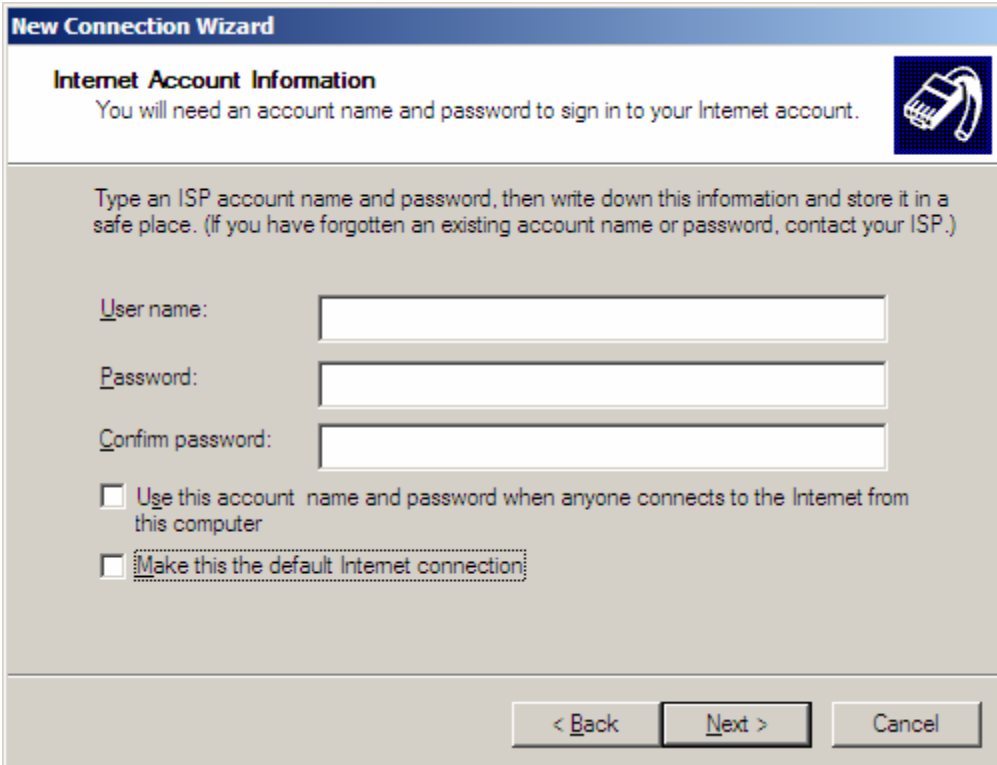
< Back   Next >   Cancel

9. Select the **Anyone's use** option then click **Next**.



The screenshot shows the 'New Connection Wizard' dialog box. The title bar reads 'New Connection Wizard'. The main heading is 'Connection Availability'. Below the heading, it says 'You can make the new connection available to any user or only to yourself.' There is a small icon of a modem in the top right corner. The main text area contains the following text: 'A connection that is created for your use only is saved in your user account and is not available unless you are logged on.' Below this, it says 'Create this connection for:'. There are two radio button options: 'Anyone's use' (which is selected) and 'My use only'. At the bottom of the dialog, there are three buttons: '< Back', 'Next >', and 'Cancel'.

10. In the Internet Account Information type in your **Unix/Email username** and **password** and then confirm your password. Ensure the two check boxes below are **unticked**. Click **Next**.



The screenshot shows the 'New Connection Wizard' dialog box. The title bar reads 'New Connection Wizard'. The main heading is 'Internet Account Information'. Below the heading, it says 'You will need an account name and password to sign in to your Internet account.' There is a small icon of a modem in the top right corner. The main text area contains the following text: 'Type an ISP account name and password, then write down this information and store it in a safe place. (If you have forgotten an existing account name or password, contact your ISP.)' Below this, there are three text input fields: 'User name:', 'Password:', and 'Confirm password:'. Below the input fields, there are two checkboxes: 'Use this account name and password when anyone connects to the Internet from this computer' (which is unticked) and 'Make this the default Internet connection' (which is unticked). At the bottom of the dialog, there are three buttons: '< Back', 'Next >', and 'Cancel'.

11. Click **Finish** to complete the Wizard and place a shortcut on your desktop. Ensure **Add a Shortcut to this connection to my desktop** is ticked.

