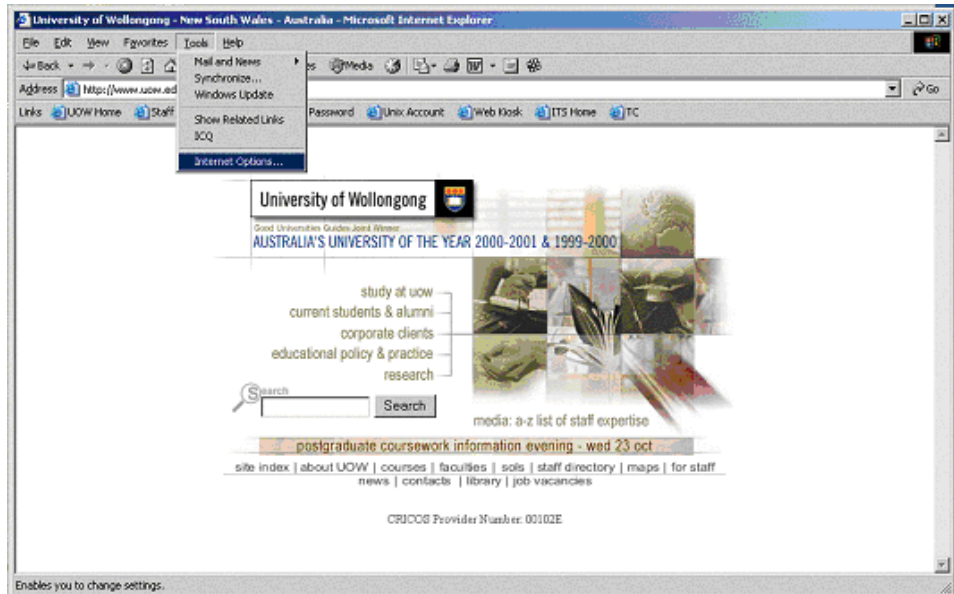
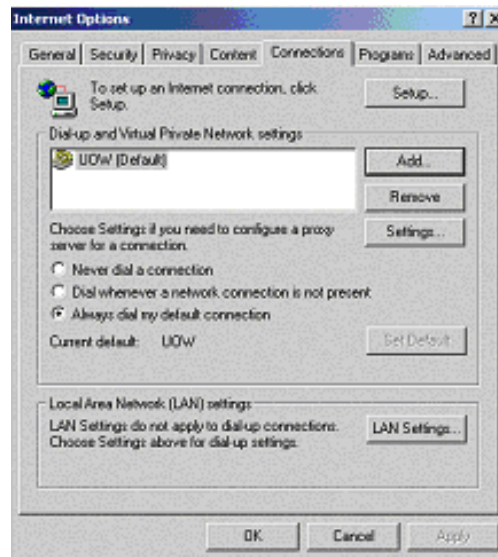


Configuring Internet Explorer

1 Click on the **Tools** menu and select **Internet Options**



2 Click on the **Connections** tab select the UOW Dial-up account and click on the **Settings** button to the right.



3 Place a tick in the Use Automatic Configuration Script and type <http://www.uow.edu.au/autoproxy.pac> Then click on **Ok** and **Ok** again.

