

Configuration of Open Transport PPP for Connection to the University of Wollongong

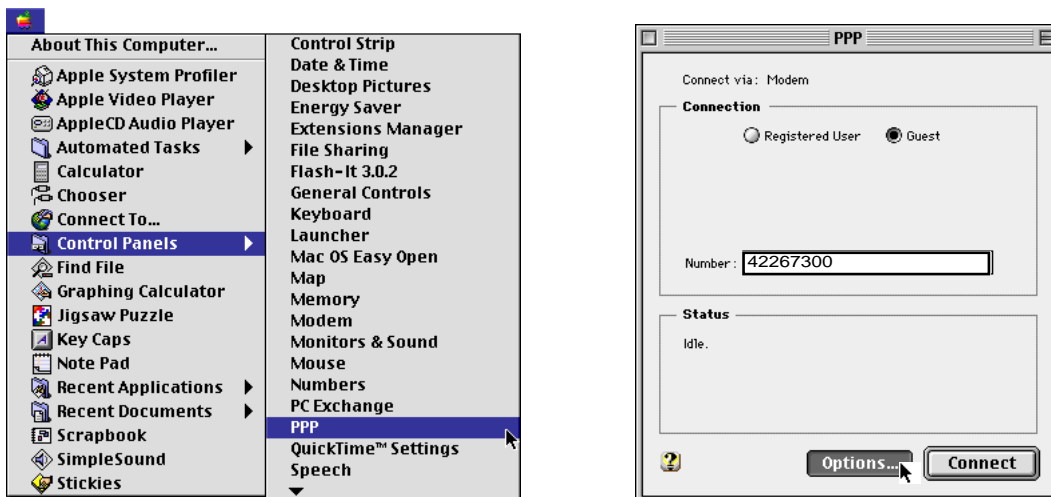
These instructions are provided for informational purposes only. If you are unable to establish a PPP connection, check carefully over each step. If you are unable to fix the problem you can book your computer in for a PPP installation/configuration service with the ITS Call Centre (42213775). There is a charge for this service and bookings are essential.

It is assumed that Open Transport PPP has already been installed on your Macintosh. The software is included with the Macintosh operating system version 7.6 and above. All new machines are shipping with the software installed. Refer to your computers User Guide for more information.

Before following these instructions be aware that they do not take into account any existing PPP setup that may be in place. If other PPP software is installed or a different configuration of Open Transport PPP is in place then following these instructions could render the existing setup unusable.

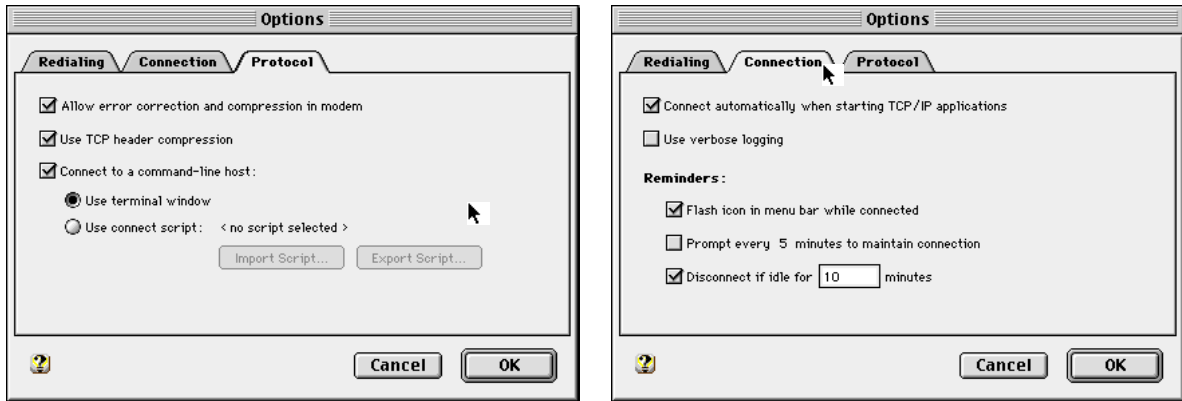
Step 1: PPP Settings

Open the **PPP** window by extending the Apple () menu, highlighting **Control Panels** and then selecting **PPP** from the sub-menu.



In the **Connection** section of the **PPP** window choose the **Guest** option.
In the **Number** box put the phone number of the modem pool you will be using.
Select the **Options** button.

Select the **Protocol** tab of the **Options** Window and configure as shown.
 Select the **Connection** tab of the **Options** Window and configure as shown.



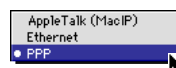
Click on the **OK** button to return to the **PPP** window which is required for Step 2.

Step 2: TCP/IP Settings

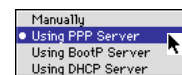
From the **PPP** menu select **TCP/IP**. If this is the first time the **TCP/IP** window has been opened you may get a warning message, in which case just click on the **YES** button.



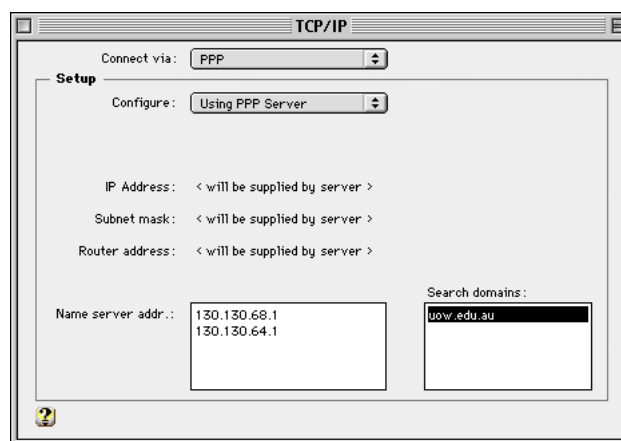
From the **Connect via** pop-up menu select **PPP**.



From the **Configure** pop-up menu select **Using PPP Server**.



Enter the **Name Server Address** and **Search Domain** information as shown.



Click on the close box in the top left corner of the **TCP/IP** window.

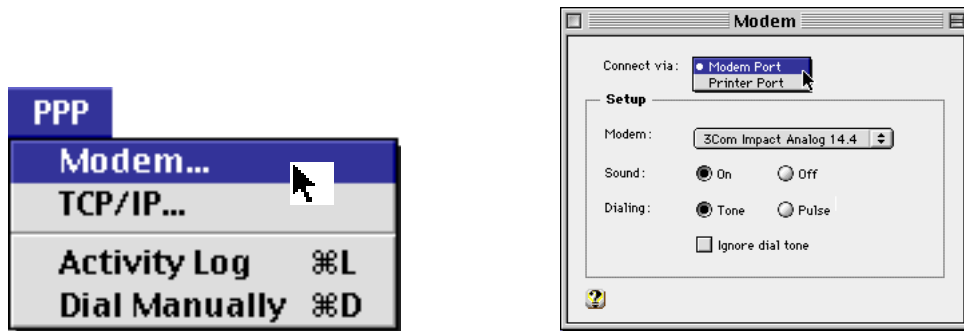
You will be prompted to save the changes. Click on the **Save** button. This will return you to the **PPP** window which is needed for Step 3.

Step 3: Modem Settings

From the **PPP** menu select **Modem**.

From the **Connect via** pop-up menu select the port to which your modem is attached.

From the **Modem** pop-up menu select the brand/model of modem you are using*.



* Refer to the **Modem Scripts** section at the end of this document if your modem is not in the list.

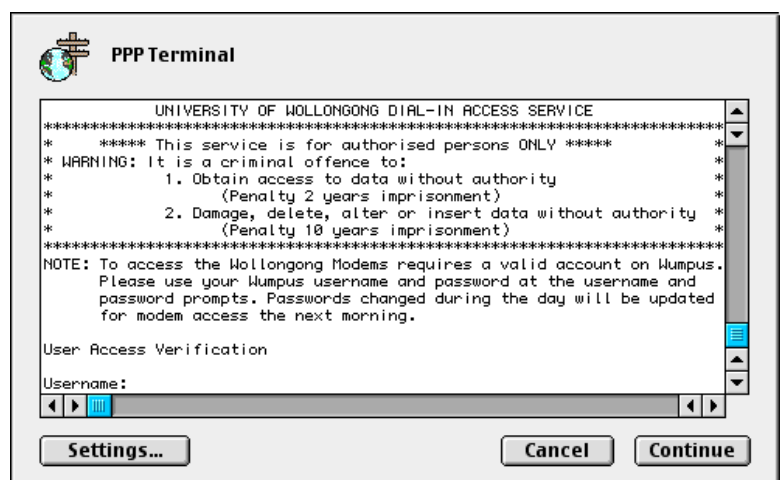
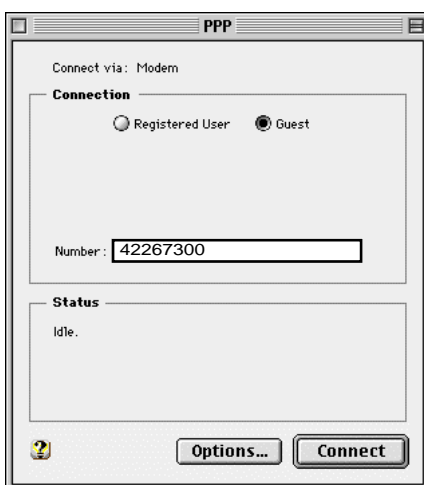
Click on the close box in the top left corner of the **Modem** window.

You will be prompted to save the changes. Click on the **Save** button. This will return you to the **PPP** window.

Step 4: Connecting

Click on the **Connect** button in the PPP window.

You should hear the sounds of the modem dialing followed by the ring tone and then a series of noises while the modems establish a connection. This will be followed by the appearance of the **PPP Terminal** window.

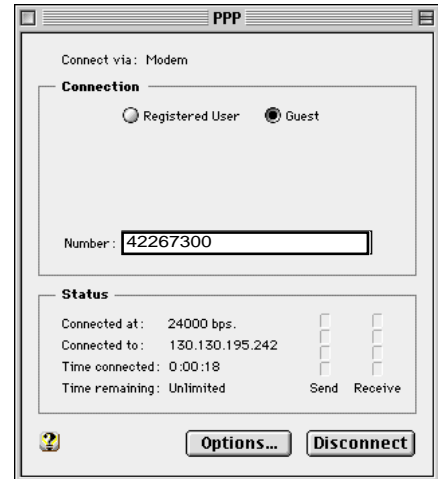
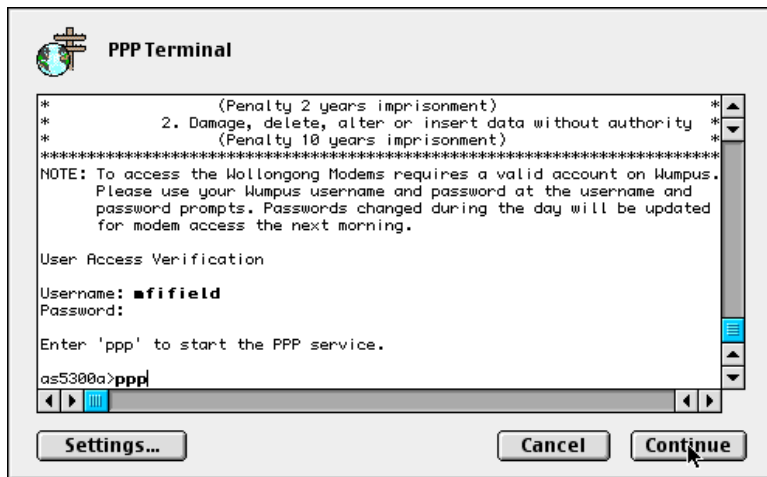


Enter your Wumpus/Unix **username** and press the **return** key on the keyboard (there is a several second delay after pressing the return key).

Enter your **password** and press the **return** key. The password will not appear on screen.

The **PPP Terminal** window will display a list of choices.

Enter **PPP** and press the **return** key.



The **PPP Terminal** window will close and the **Status** section of the **PPP** window will be updated to show connection information. A connection is now in place and programs such as Netscape, Explorer, Eudora, etc can now be started.

Notes:

- Once Steps 1 - 3 have been completed PPP connections can either be started manually as outlined in Step 4 or by simply starting an application that requires a PPP connection.
- PPP connections are time limited to two hours (the "Unlimited" time remaining in the **Status** section of the **PPP** window is incorrect).
- Quitting a program that automatically initiated a PPP connection does not disconnect the link. You need to Click on the **Disconnect** button of the **PPP** window to hang up the modem. Shutting down the computer will also disconnect the modem.
- For security reasons the Unix system requires you to change your password periodically. The Annex system that controls modem access receives password updates each night, which means that it will not recognise the new password until the following day. The old password will be valid until the update has occurred.

Modem Scripts

If your modem is not in the list of modems in the **Modems** window from **Step 3**, check the software that came with your modem for a modem script (often called an ARA script or Remote Access script) named after your modem. If found, the script needs to be placed in the **Modem Scripts** folder which is located in the **Extensions** folder which is in the **System Folder**. The **Modem** window will need to be closed and reopened for the list of modems to update for the new script.

If you cannot find a script try the following:

- Ask at the place you bought the modem.
- Look at the modem manufactures web site.
- Look on the ITS Public Volume.

Alternately you could experiment with the available scripts:

- Try a script for a different model of the same brand of modem you are using.
- Select a Hayes script of the same speed as the modem you are using.

There is also an unsupported program available on the ITS Public Volume for generating modem scripts. The Apple Modem Script Generator requires information about your modems command set. This information should be in your modems manual.