

## What's On?

### September

- 3 Pre-Admission Information Day (Shoalhaven Campus)
- 4 Pre-Admission Information Day (Wollongong Campus)
- 12 Admissions Interviewer Training Day
- 29 Admissions Interview Week commences

A Schedule of GSM Committee Dates for September, October, November and December is available on the final page of this newsletter.

Contributions to this newsletter regarding GSM centred events are both welcome and encouraged. Please submit via email to Jenni Broadhead ([jb@uow.edu.au](mailto:jb@uow.edu.au)) The deadline for articles to be included in the November edition is Friday October 23<sup>rd</sup>.

## A Note From the Dean

*Professor Liz. Farmer*

### Phase 3 Launches successfully

Since the inception of the medical school, there has been much excitement and anticipation of the innovative longitudinal community based placements programme (Phase 3 of the MBBS). Now, as a result of significant strategic planning, consultation and hard work with many diverse and committed partners, the programme has commenced successfully and our 68 Phase 3 medical students are now undertaking placements of a full academic year in 8 teaching and learning centres across NSW. These include the Illawarra (20), Shoalhaven (8), Milton/Ulladulla (3), Southern Highlands (6), Mudgee (3), the Murrumbidgee (6), Broken Hill (3) and the North Coast (19).

As students live, learn and work in rural remote and regional communities, this important academic year will provide them with the opportunity to consolidate and develop their important theoretical and clinical skills already gained within Phases 1 and 2 of the MBBS. Through clinical experience including the provision of patient care across a continuum from general practice, the hospital and community facilities, these long term placements will help further support and prepare our students for internship, ongoing training and future medical practice,



especially in rural and regional areas. Reports from all regions have so far been positive. Students have been welcomed by communities, health service staff and patients in all regions and they are also reporting access to a broad and diverse range of clinical and professional experiences. I would like to take this opportunity to thank Professor Nicky Hudson and the Community Based Health Education team on this significant milestone. In particular I would like to recognise the important role of our Regional Community Academic Coordinators and professional staff in all regions, who work closely with students, medical practices, clinicians, health service administrators and community to implement and sustain a range of medical school activities in their region. We look forward to watching the development and progress of this important educational initiative in the next year.



## Appointment of Keith Smith to Regional Development Australia – Illawarra.

On 3 December 2008 Parliamentary Secretary for Regional Development, Gary Gray, and NSW Minister for Regional Development, Phillip Costa, announced their commitment to create a new joint Commonwealth-State regional development network *'to help guide economic growth across regional NSW'*.

The existing NSW Government's 13 Regional Development Boards with the Commonwealth Government's 14 Area Consultative Committees would be brought together to establish a new Regional Development Australia (RDA) network.

In a recent joint media release by the ministers the composition of the RDA across Australia was announced. Keith Smith the Rural Clinical Placements Project Manager with the GSM has been appointed to the RDA Illawarra Committee. Keith hopes that he will be able bring a focus on the task of supporting the growth of sustainable social enterprises as an integral part of economic and social development.

*'RDA is charged with working in partnership with the Australian state, territory and local governments.*

*RDA is the face of regional policy in Australia. RDA's roles include:*

- *Identifying and advising government about issues affecting the region;*
- *Raising awareness in the community about government programs;*
- *Facilitating the coordination of regional development initiatives; and*
- *Ensuring there is effective engagement between government and communities*

*The three core responsibilities of RDA Committees are to:*

- *Be a key facilitator of change and development in their region*
- *Be the link between government, business and the community in their region*
- *Facilitate the whole of government responses to opportunities and needs in regional communities.*

*RDA will help local communities and regions achieve economic, social and environmental sustainability, by determining their own needs and priorities, and planning for and leading their own development.*

The GSM would like to extend its congratulations to Keith on this important appointment.

\* \* \* \* \*

## Admissions Report

*Jenni Broadhead- GSM Admissions Officer*

### International Students for 2010

At the time of going to press, 8 international students have accepted their offer for a place in the 2010 cohort.

4 second round offers have been extended with candidates' deadline for acceptance August 28<sup>th</sup>.

11 offers originated from AustraLearn,-our agent in Canada and 1 offer resulted in an application through ACER.

### Domestic Students

The number of domestic applications to UOW has increased significantly this year. 531 candidates placed UOW GSM as a preference. 348 candidates were considered for an invitation to interview. 126 placed UOW GSM as their 1<sup>st</sup> preference, 118 as a second preference, while 104 placed us third.

All applicants submitted a portfolio which was scored by the Admissions Officer and a team of UOW academics. Thank you to all involved. The portfolio is the main component in the consideration as to whether those applicants will be invited to interview, and is the only criteria that is revisited post interview. Scoring the portfolio is a huge and time consuming task. It also provides the GSM a significant insight of applicants to our programme and ensures that the vision and mission of the GSM is maintained. All criteria to UOW have been met at a high level across the board. GAMSAT, GPA and portfolio scores suggest that the cohort for 2010 will adapt to the academic challenges ahead quite successfully.

117 students received invitations to interview in the week commencing August 17<sup>th</sup>. These students were contacted via email prior to the invitation package being sent. All candidates invited to interview are urged to visit both campuses for a pre-admission information day. This will occur at our Shoalhaven campus on Thursday 3<sup>rd</sup> September and at Wollongong on the 4<sup>th</sup>. This enables students to familiarize themselves with the interview venue, as well as to talk to current students and academic staff. Having the opportunity to view and get a "feel" for both campuses hopefully helps them in their decision as to their preferred campus location.

Interviews will be conducted over 4 days from 29<sup>th</sup> September -2<sup>nd</sup> October. We have had an incredible response to the invitation to interview our next cohort. This has resulted in 126 members of the GSM community contributing their expertise as interviewers or observers for the 3 sessions per day, each consisting of 10 stations.

After Interview Week concludes, candidate station scores will be collected and combined with their portfolio scores. Offers will be sent by the University to the top ranked 72 candidates in the week commencing October 12<sup>th</sup>.

\* \* \* \* \*

## GSM to host International Conference.

*Alissa Tran - Conference Coordinator*

The GSM looks forward to hosting a conference of national and international delegates in the medical academic fraternity in November of this year. As part of a commitment to enhance assessment of medical students as well as providing ongoing professional development opportunities, an IDEAL Consortium workshop will be held at the University of Wollongong on November 24<sup>th</sup> -25<sup>th</sup>, to produce quality written assessment items and to train staff to further develop their item writing skills. The International Database for Enhanced Assessments and Learning (IDEAL) Consortium, of which the GSM is a member, strives to promote and share quality assessment information and provides opportunity to communicate this across an international medical community. The GSM itself will be sponsoring a second component to this workshop exploring new and innovative tools for assessing senior students and medical trainees. Professor Brian Jolly from Monash University will present an afternoon workshop on Thursday, Nov 26<sup>th</sup> on the assessment of medical students and trainees in the workplace. Professor Bernard Charlin from the University of Montreal will present a full day workshop on Friday, Nov 27<sup>th</sup> on the Script Concordance Test (SCT) approach to testing clinical reasoning skills.

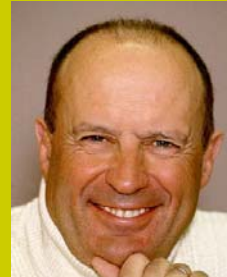
International and national experts will also be in attendance to present at the IDEAL Consortium Meeting including Susan Case as keynote speaker in the IDEAL Consortium Sessions. Susan, a psychometrician whom presently holds the position of Director of Testing at the National Conference of Bar Examiners, is the lead author of the NBME's text "Constructing Written Test Questions for the Basic and Clinical Sciences and is regarded as one of the world's foremost authorities in assessment of medical students. Expert facilitators and guests will also include Tim Neild, a physiologist particularly knowledgeable in the use of Modified Essay Questions; James Ware who is trained as a Surgeon and presently holds the title Professor of Medical Education at the University of Kuwait and Clarke Hazlett, who has expertise in psychometrics and recently retired as Professor of Medical Education at the Chinese University of Hong Kong where he founded the IDEAL Consortium. From our own GSM faculty, Nicky Hudson and Liz Farmer will also be sharing expertise and experiences for the delegates.

The workshops will be held over four days with the expected outcomes that all registrants have an opportunity to learn and explore innovative ways and tools to practically implement in their own assessments, and also providing a forum where delegates can benefit from a diverse pool of international knowledge and

experience. Whilst the conference is a professional development opportunity for delegates it will also be a wonderful opportunity to showcase our school, university and the area to a national and international audience.

Further information regarding the conference, including registration details can be obtained by contacting Alissa Tran at [a.tran@uow.edu.au](mailto:a.tran@uow.edu.au)

\* \* \* \* \*



*Professor Bernard Charlin-  
University of Montreal*



*Professor Brian Jolly-  
Monash University*

## Clinical Academic Profile

### Dr Joe Farrugia



Dr Joe Farrugia (MB, BS (Syd)'86), originally from Bondi, has been a GP in the Illawarra for the past 19 years. He practices in Balgownie and Corimal with his colleagues Dr Michael Speed and Dr John Byrne, and has developed a special interest in dermatology.

When the GSM opened in 2007 Dr Farrugia agreed to become a phase 1 preceptor and will shortly welcome the eleventh and twelfth GSM students to his practice. Dr Farrugia comes in on his afternoon off to conduct teaching sessions, having invited patient volunteers with presentations pertinent to his students unfolding curriculum.

Dr Farrugia enjoys teaching the students immensely, and finds he is learning as well as teaching. He hopes that some of his students will one day also experience the delights of living and working in the Illawarra.

\* \* \* \* \*

## Phase 2

*Wilf Yeo- UOW Professor in Medicine-Co-Chair of Phase 2*

The written and clinical examinations were held in June, with the re-sit examinations completed in July 2009. Seven students failed to achieve the required standard at the first sitting.

Overall 69 students have progressed to Phase 3, which as you know is the longitudinal community-based attachment. Six students achieved an 'Excellent' grade. The excellent reflects high scores during Phase 2 in the written papers, OSCE, preceptor reports for clinical rotations and written assignments in reflective practice and research and critical analysis. One student performed particularly well in both written and clinical exams and was the clear candidate for the Illawarra and Shoalhaven medical staff councils chair's prize.

At the end of Phase 2 we ran a revision/wrap up week and asked for overall student feedback for the phase. The clinical rotations were well received with students reporting positively on the experience and on some of the various teaching initiatives such as the student grand rounds, clinical anatomy and pharmaco-therapeutic tutorials. In particular, students consistently rated highly the diversity of clinical experiences available to them in the individual rotations. Nearly 90% reported that they were able to spend sufficient time in the hospital performing clinical activities. The contribution of senior medical staff, NUMs, nurses, allied health professionals and junior medical staff in facilitating the learning activities of our students has been immense, and easily matched our expectations for clinical rotations in Phase 2.

Submissions by individual contributors to the Phase 2 report for the 2007 cohort are being collated and the report will be ready within the next fortnight.

The 2008 cohort has started Phase 2 successfully. On the whole, clinical rotations and campus based teaching seems to be working well. We have conducted two Phase 2 preceptor meetings recently to reinforce changes in the assessment methods during Phase 2.

\* \* \* \* \*

## Phase 2 Wrap up

*Jenny Deura - Acting Manager Clinical Placement ,  
Wollongong Hospital*

Phase 2 "Wrap up" week was inserted into the Year Plan as an intensive revision focussing on each of the specialty rotations. There was a mixture of didactic presentations and clinical skill revision with ample time for student questions. The opportunity was taken to gather student feedback on Phase 2 with open discussion forums and formal surveys.

Monday was dedicated to Medicine which was run by Dr H. John Fardy, Professor Wilf Yeo and Mr. Lou Gaetani.

Tuesday, Dr Michael Quilter and Dr Chris Georgiou ran didactic and clinical skills sessions in Women's and Maternal Health in preparation for the upcoming OCSE.

Wednesday was dedicated to Child and Adolescent Health. Dr Mark De Souza prepared numerous cases for the students and was inundated with student questions.

Thursday was dedicated to Surgery with Professor Noel Tait reviewing surgery cases and practical skills for the exams.

On Friday, Professor Nagesh Pai, Dr Liz Almond, Professor John Bushnell and Kerry Dawes reviewed Mental Health, again with lots of practice scenarios for the students' upcoming exams.

A big thank you to everyone who contributed to this wonderful and busy week. This has proved to be a great platform on which to build a similar event in future years. We look forward to a similar, but better, event in 2010.

\* \* \* \* \*



## Phase 3

### Medical Students At North Nowra Medical Practice

*Sue Ronayne- Assistant Placement Facilitator, Shoalhaven*

In July 2009 two GSM Phase 3 students were assigned to the North Nowra Medical Practice in the Shoalhaven to commence 12 month longitudinal community based placements. Students Melissa Hoffman and Monique Peris have been thrilled with their experiences so far.

Phase 3 community based placements from a base in a General Practice, offers students a wide range of clinical and professional experiences including parallel consulting sessions twice a week and other opportunities to participate in patient care in the practice such as working with the Practice Nurse. It also enables students to participate in patient care outside the practice, learning from specialists and community practitioners in a range of settings.

According to Melissa, "All of the staff at North Nowra Medical Practice have been extremely welcoming and enthusiastic about our placements, making it a great environment to learn in. The patients have also been very accepting and have been happy to have us involved in their care."

"A long term clinical placement really helps to bring the books alive and working at the practice with such a diversity of patients means that I am learning a lot. We also have the opportunity to follow patients referred to specialists or to the hospital for further treatment, which is another great learning experience in terms of continuity of care and exposure to multidisciplinary teams" added Monique. The Practice has bought digital cameras for the students so they can capture and record their clinical experiences along the way. It enables them to photograph the progression of specific conditions or keep a record of case presentations that can later be used as part of a reflective or academic portfolio.

Dr Michael Browne is very pleased about the way in which the placements are progressing. "After just a few weeks, our two Phase 3 students are finding their feet and becoming more confident in their role within our practice. We enjoy having students and our recently expanded practice is proving to be a great place for teaching real-life Medicine."

North Nowra Medical Practice is committed to the education of current and future medical students and feels privileged to be part of the development of the next generation of doctors. "We are excited by the fact that we are able to teach students from the very beginning of their course to the attainment of medical qualifications. We are also looking at ways to effectively integrate the teaching of our postgraduate registrars and our Phase 1 and Phase 3 GSM students.

We look forward to our growing relationship with the University of Wollongong," Dr Browne said.

\* \* \* \* \*



*Students Melissa (left) and Monique with their Phase 3 Preceptors and UOW Honorary Clinical Academics Dr Paul Allin (left) and Dr Michael Browne.*

### OCTAL Award- (Outstanding Contribution to Teaching and Learning).

Dr Judy Mullan is presented with OCTAL Award by the Vice Chancellor Professor Gerard Sutton.



More information regarding Dr Mullan and this prestigious award will feature in the October edition of GSM Matters.

### A Big Thank you

**Dr Kylie Mansfield- Academic Leader Phase 1**

I would like to say a big thankyou to the local Wollongong and Shoalhaven clinical community who have embraced the GSM and made numerous contributions to the teaching of students in Phase 1.

I have been putting together some numbers for my Phase 1 report and was amazed to see that a total of 207 clinicians taught into our Phase 1 curriculum in 2008.

This included: 68 giving lectures, 20 presenting clinical demonstrations, 7 contributing to on-line GOALS, 2 teaching anatomy, 11 facilitating CBL tutorials, almost 100 taking students for general practice or hospital placement and 43 teaching students in clinical skills. This is an amazing contribution considering that Phase 1 offers the fewest opportunities for clinician involvement.

Thankyou for your willingness to be involved with both our curriculum and our students.

## Library News

Jen Lyons- GSM Librarian



Jen Lyons -  
GSM Librarian

The Library has introduced a new-look Search page to help you in accessing our resources. Visit the Library website at [www.library.uow.edu.au](http://www.library.uow.edu.au) and click on the link to 'Catalogue'. The new tabbed Search box includes the following tabs for different searches:

**Search Guru** – a Google-type interface which allows simple searching of the Library Catalogue. Results can then be refined by clicking on the subject tags on the right or on the limits such as format, location etc on the left.

**Classic Catalogue** – an alternative option for searching the Catalogue. Allows you to search by specific fields such as journal title, author etc. The 'Advanced Search' link goes to a multifold search option for more complex searches.

**Article Finder** – use to search across various databases simultaneously. The 'Advanced subject search' provides further search options in faculty/subject areas

**My Library** – logs you into your borrowing record where you can check due dates, renew items on loan and set up a 'Reading History' to keep track of books you've borrowed.

Further details on each of these search tabs is available from the blue and white '?' icon next to each search box.

### Featured Resource – Murtagh's Online

UOW Library has recently subscribed to the Murtagh's Online package which allows online access to John Murtagh's texts "General Practice", "Patient Education" and "Practice Tips".

To access these titles, you can visit the Library Catalogue and search by author or title. Online access to these texts is available by logging in with your UOW email username and password.

Alternatively, you can visit our Medicine resources guide at <http://uow.libguides.com/medicine> - click on the Books & encyclopedias tab and click on the 'E-books for Medicine' link in the right-hand box. These Murtagh titles are listed under 'General Practice'.

**For help with any of these Library resources, please contact Jen Lyons, Medical Librarian on (02) 4221 5595 or email:**

## GSM Committee Meetings for September, October, November and December

Committee	Day	Time	Sep	Oct	Nov	Dec
Admissions	Tuesday	6.00pm-7.00pm			17	
Assessment	Monday	12.00pm-1.30pm	7	12	2	7
Clinical Academic Appointments	Wednesday	6.30pm-7.30pm	23	21	18	
CTLC-Illawarra (Wollongong Hospital)	Thursday	4.30pm (Woll. Hospital)		15		
CTLC-Illawarra (Shoalhaven Hospital)	Wednesday	7.30am (Shoal. Hospital)	30		25	
Curriculum	Thursday	8.30am-10.00am		8		10
Executive	Thursday	8.30am-10.00am		15		17
Phase 1	Thursday	8.30am-10.00am	17		12	
Phase 2	Friday	10.30am- 12pm	18	16	20	18
Phase 3	Thursday	8.30am-10.00am	24	22	19	
Phase 4	Friday	8.30am-10.00am		16		18
Quality Assurance and Evaluation	Thursday	9.00am-10.00am		29		
Research	Thursday	9.00am-10.00am	10		5	
UOW/SESIAHS Partnership Committee	Tuesday	9.00am-10.00am		27		
UOW/SESIAHS Professorial Unit Mtgs	Wednesday	5.00pm-6.00pm		14		9