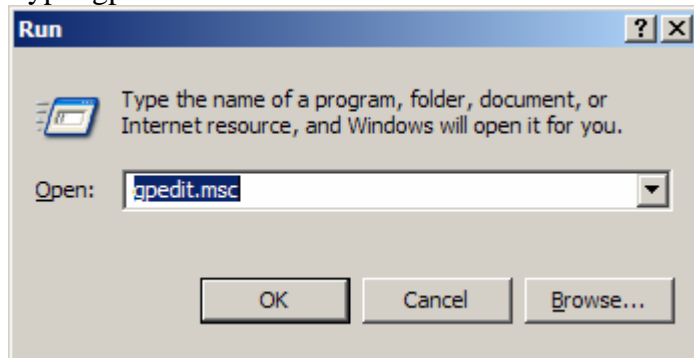


Configure a Computer to Access Microsoft WSUS at University of Wollongong

Click 'Start' > 'Run'

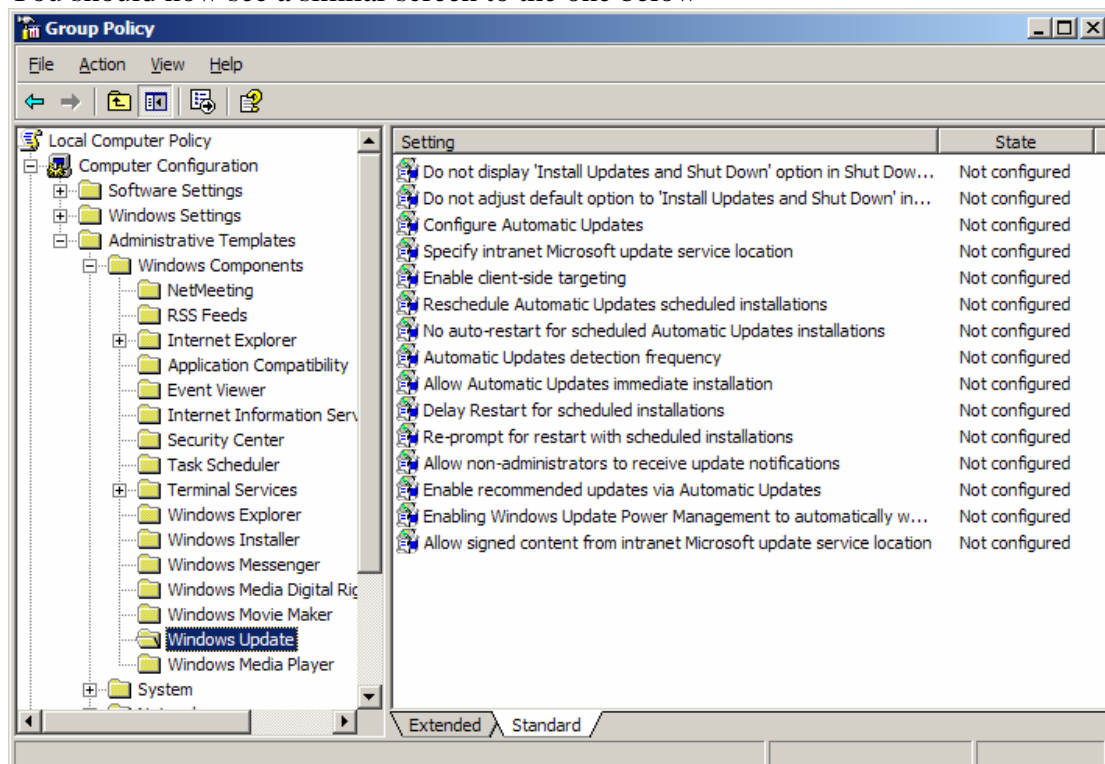
Type 'gpedit.msc' and click 'Ok'



Navigate to the following location in the new window:

Local Computer Policy > Computer Configuration > Administrative Templates > Windows Components > Windows Updates

You should now see a similar screen to the one below

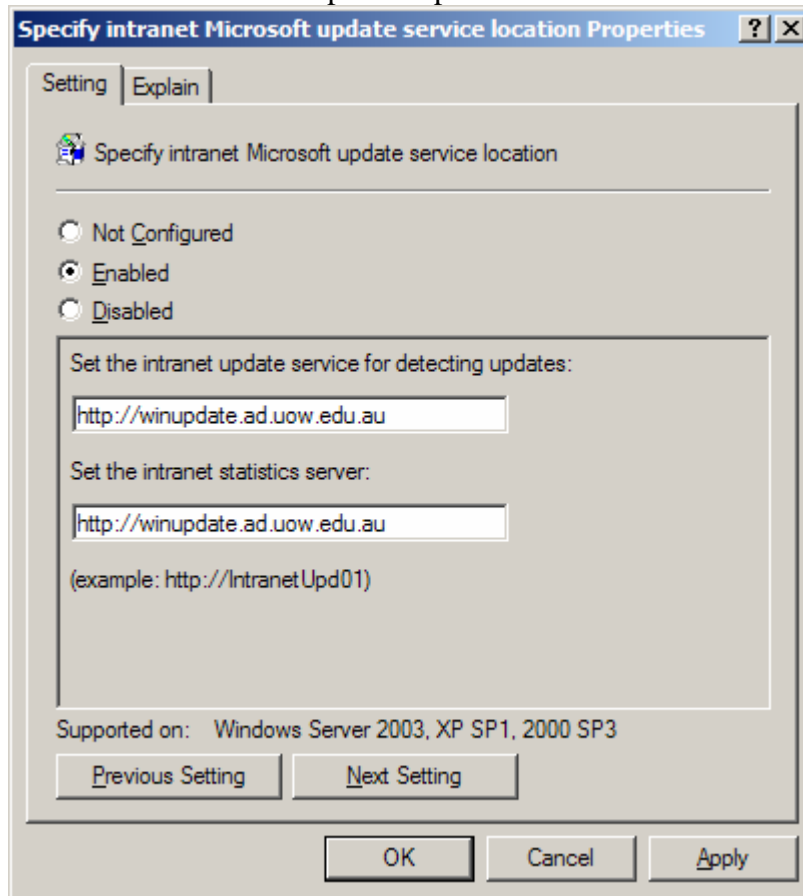


Double click 'Configure Automatic Updates'

Select 'Enabled' - *You may wish to customise the settings in this dialog box to suit your usage.*

Click 'Ok'

Double click 'Specify intranet Microsoft update service location'
Select 'Enabled'
Set both text boxes to http://winupdate.ad.uow.edu.au



Click 'Ok'

Close the Group Policy editor by click 'File' > 'Exit'