

Everywhere Internet



Internet for Everyone

In-room instructions
June 2008
Version 1.2

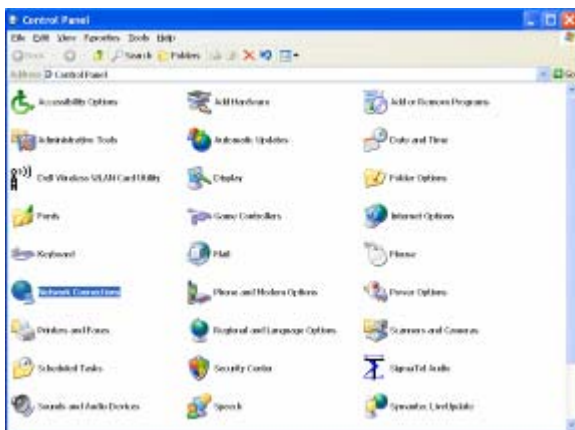
Connecting your computer to the Everywhere Internet network in your room

1. You need a network cable to connect your computer to the network. The cable is different from a telephone cable. It is often called CAT5 cable. You have to provide your own cable or purchase one from your local campus reception.
2. Plug in the cable to the socket in your room. Usually it is socket B (the right hand side socket).
3. Configure your computer to get an IP address automatically.
4. Check Internet Explorer Settings so it uses no proxy.

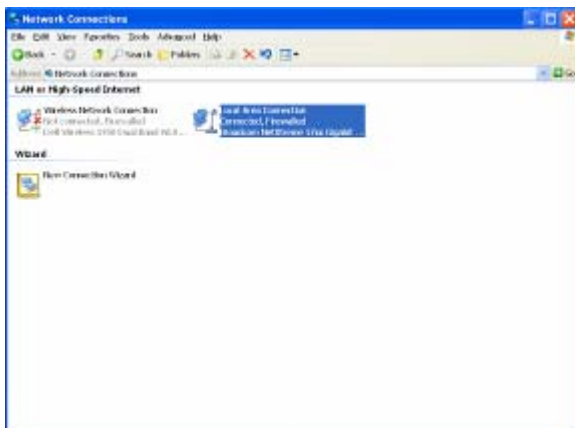
How to make it work with Microsoft Windows XP?

To get an IP address automatically

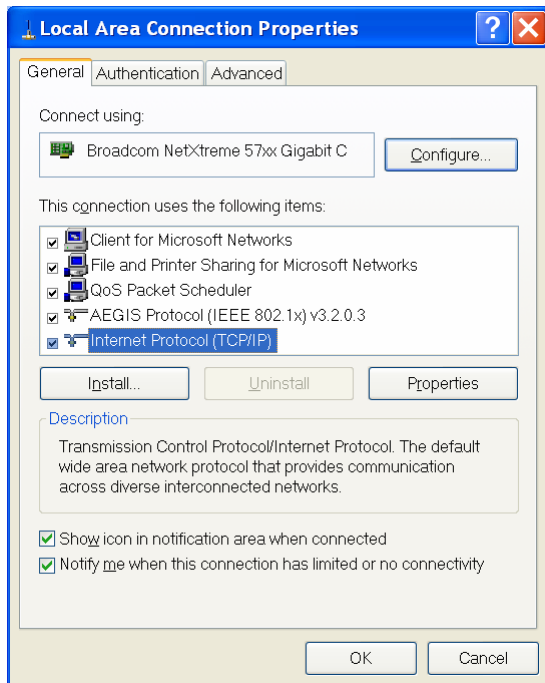
1. Click on Start → Control Panel → Network connections



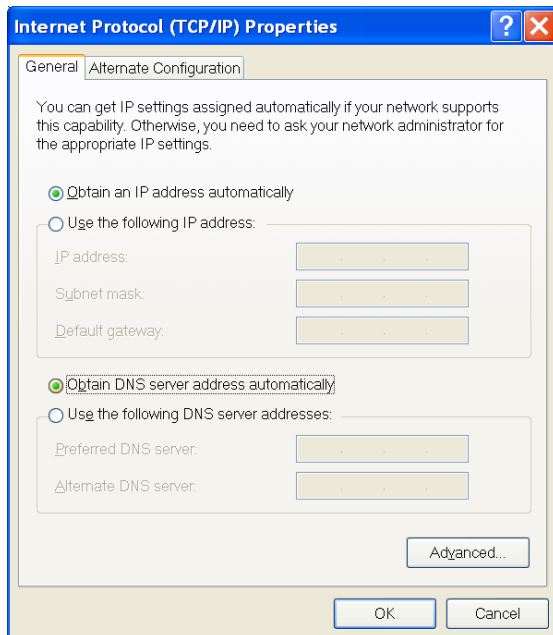
2. Right click Local Area Connection and select Properties



3. Select Internet Protocol (TCP/IP) and click on Properties

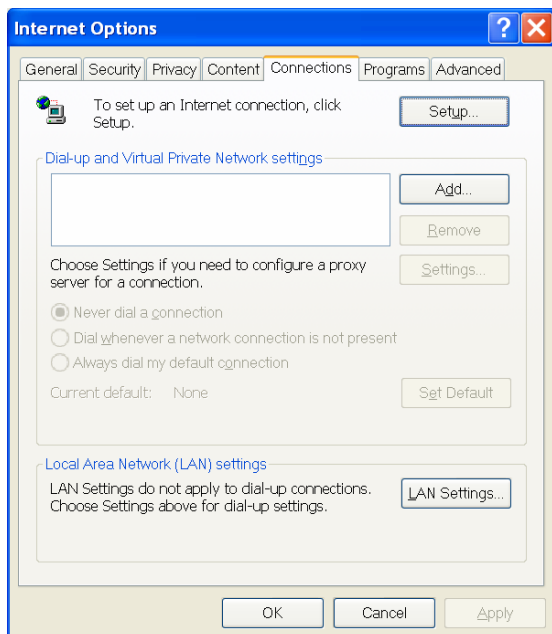


4. Make sure you select "Obtain IP address and DNS server address automatically".

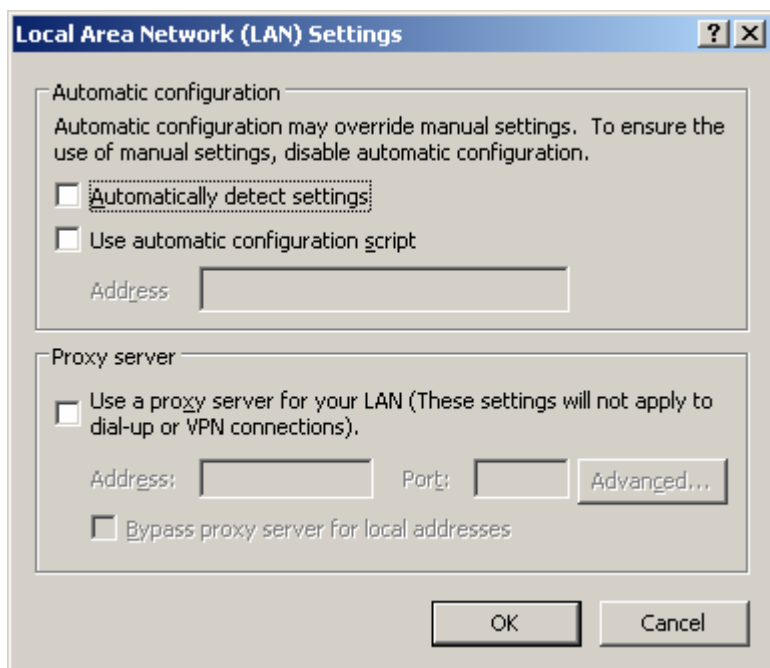


Configuring Internet Explorer

1. Run the Internet Explorer.
2. From the top menu, choose Tools → Internet Options... → Connections tab



3. Click on the "LAN Settings..." button.



Make sure your PC is setup with no proxy as above.

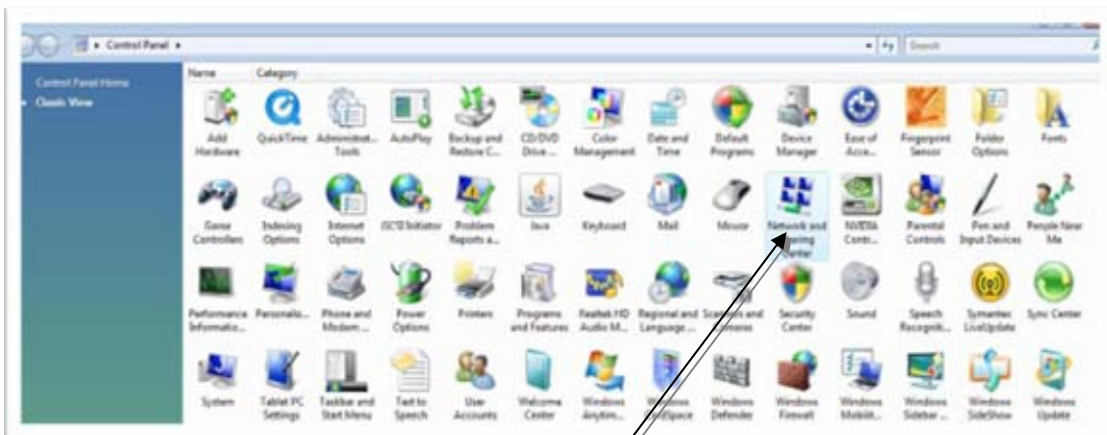
How to make it work with Microsoft Windows Vista?

To get an IP address automatically

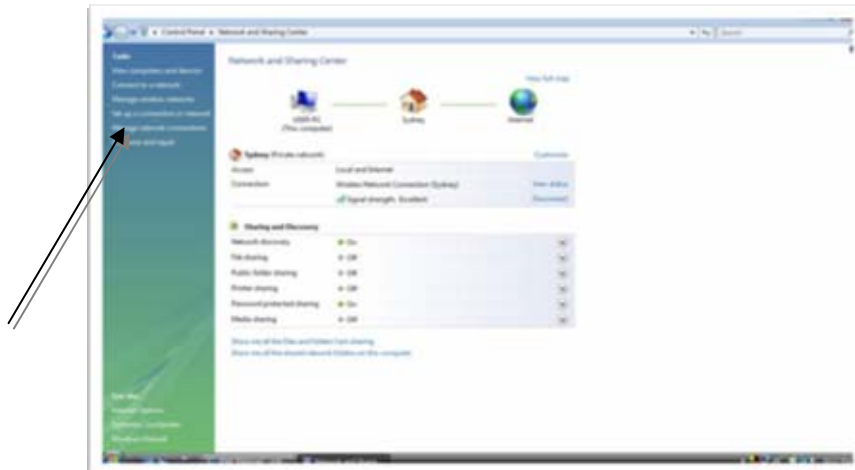
1. In Windows Vista's desktop, go to Start ->



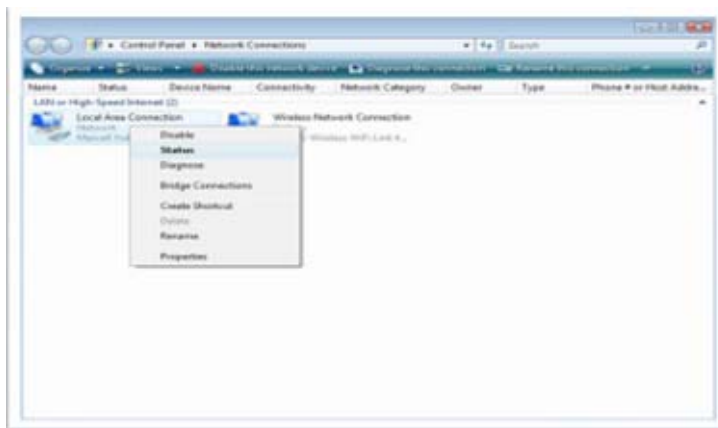
2. Control Panel



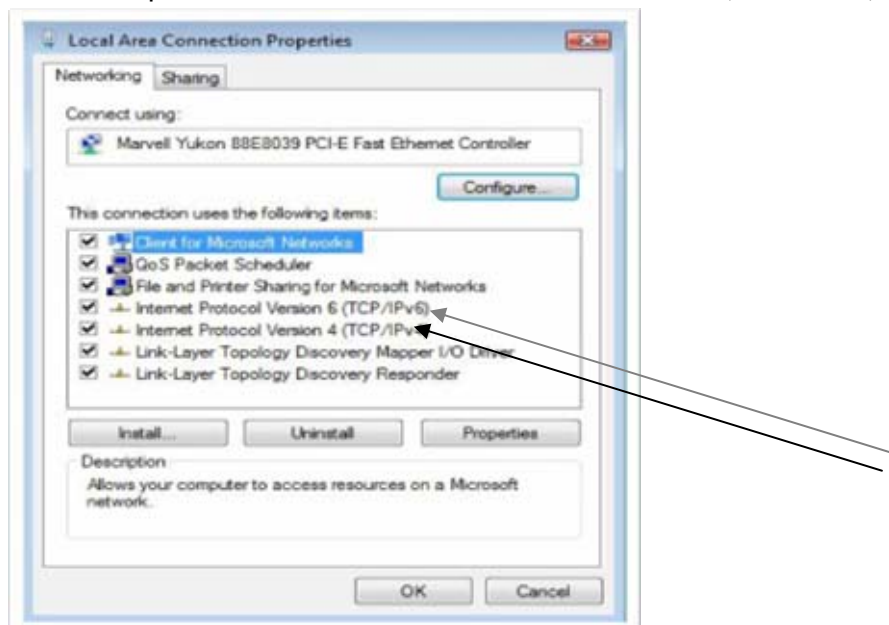
3. In Classic View of "Control Panel", double-click on "Network and Sharing Center" and then select "Manage Network Connections"



4. Right Click "Local Area Connection" and select "Properties"



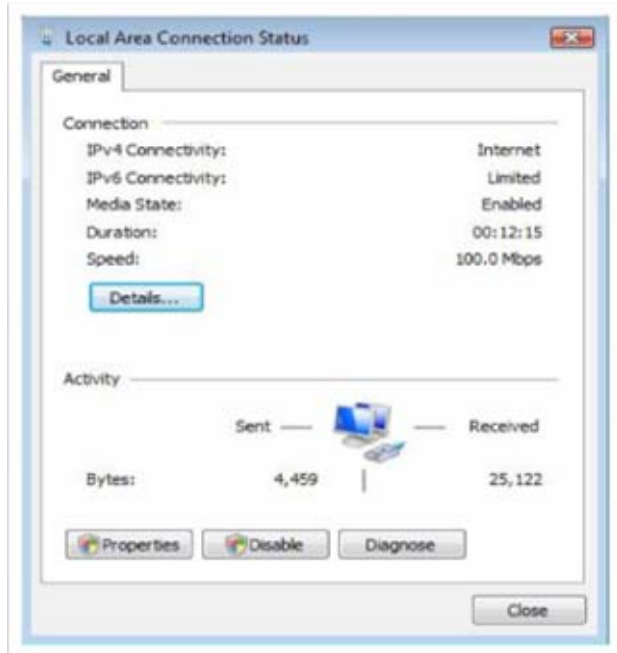
5. In the Properties of "Internet Protocol Version 4 (TCP/IPv4)"



6. Select "Obtain an IP address automatically" and "Obtain DNS server address automatically"

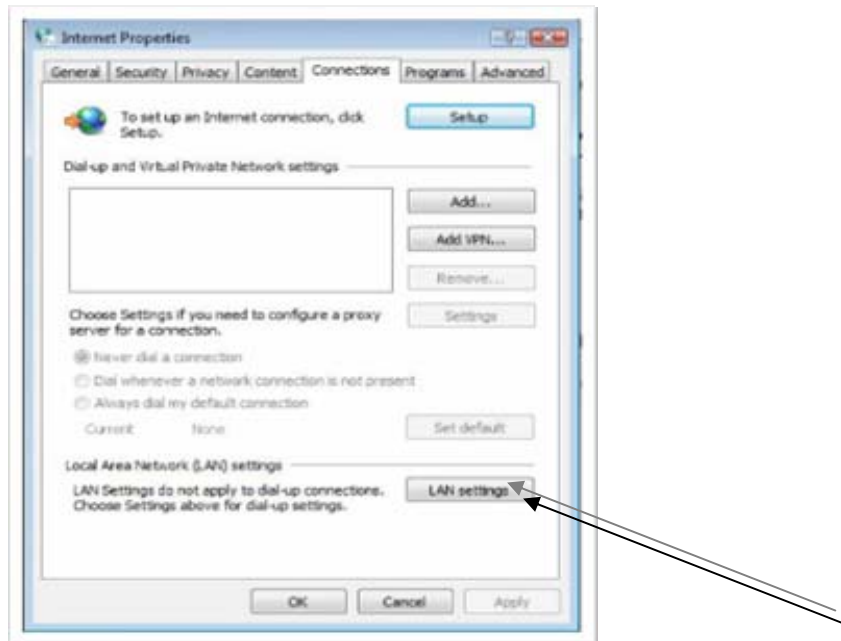


7. Finally, the connection status can be as follows: -

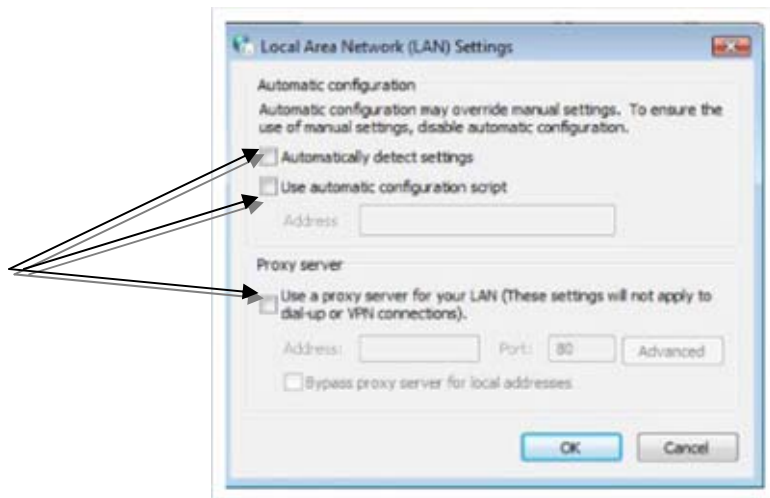


Configuring Internet Explorer

1. Run the Internet Explorer
2. From the top menu, choose Tools -> Internet Options -> Connection tab



3. Click on the "LAN settings"

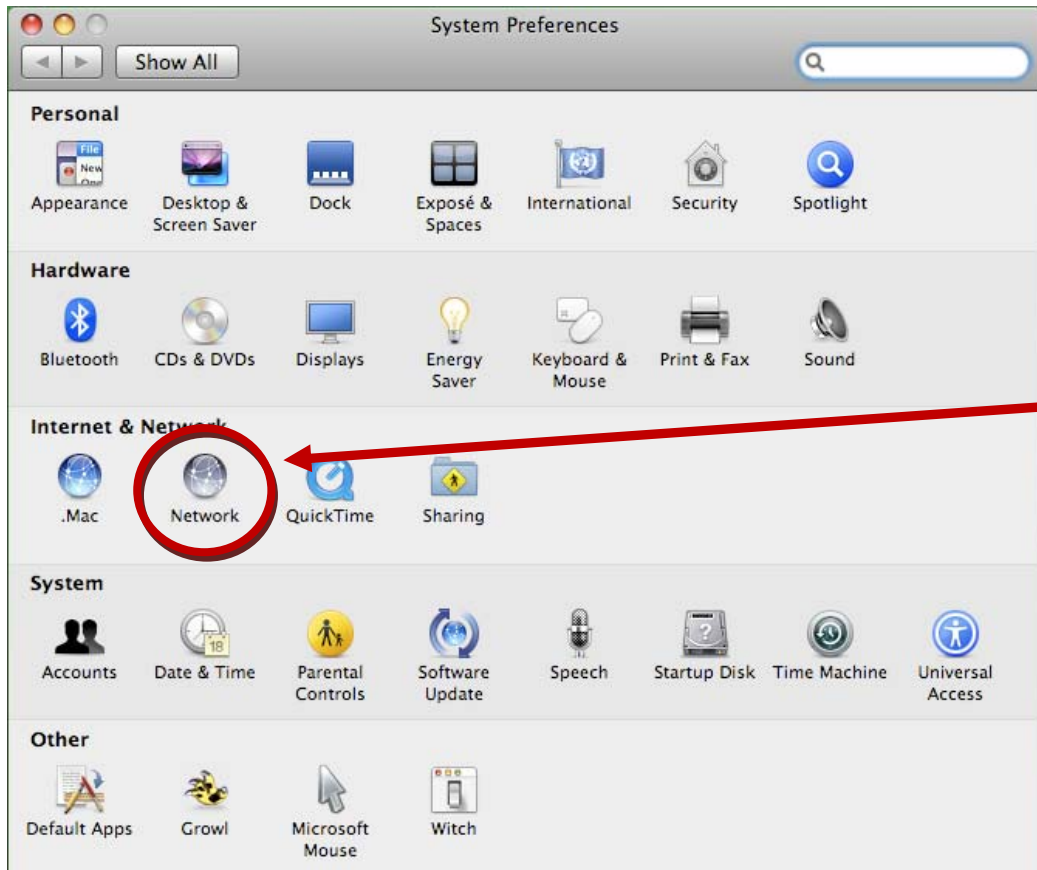


4. None of them are selected as above.

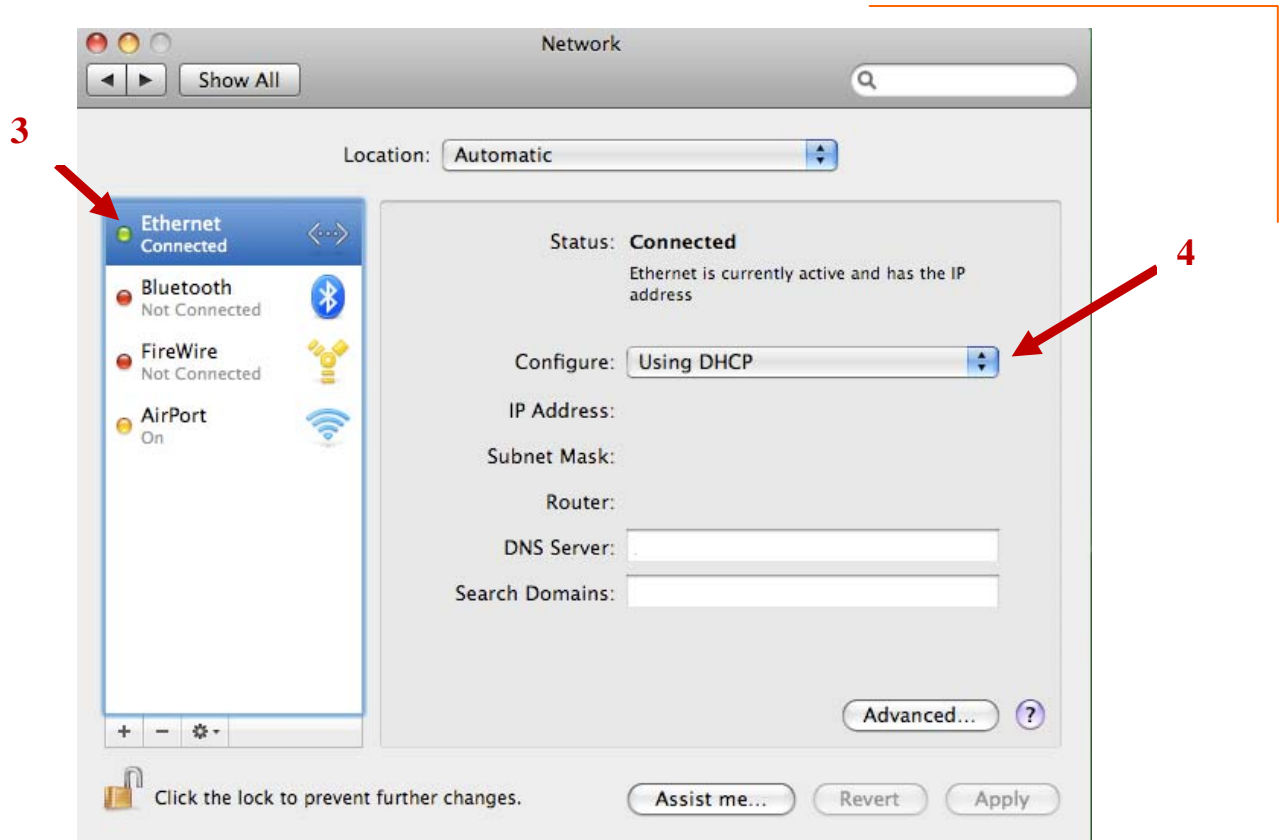
How to make it work with Apple Mac OS X?

To get an IP address automatically

1. From the Apple menu and select System Preferences.
2. Click on Network.

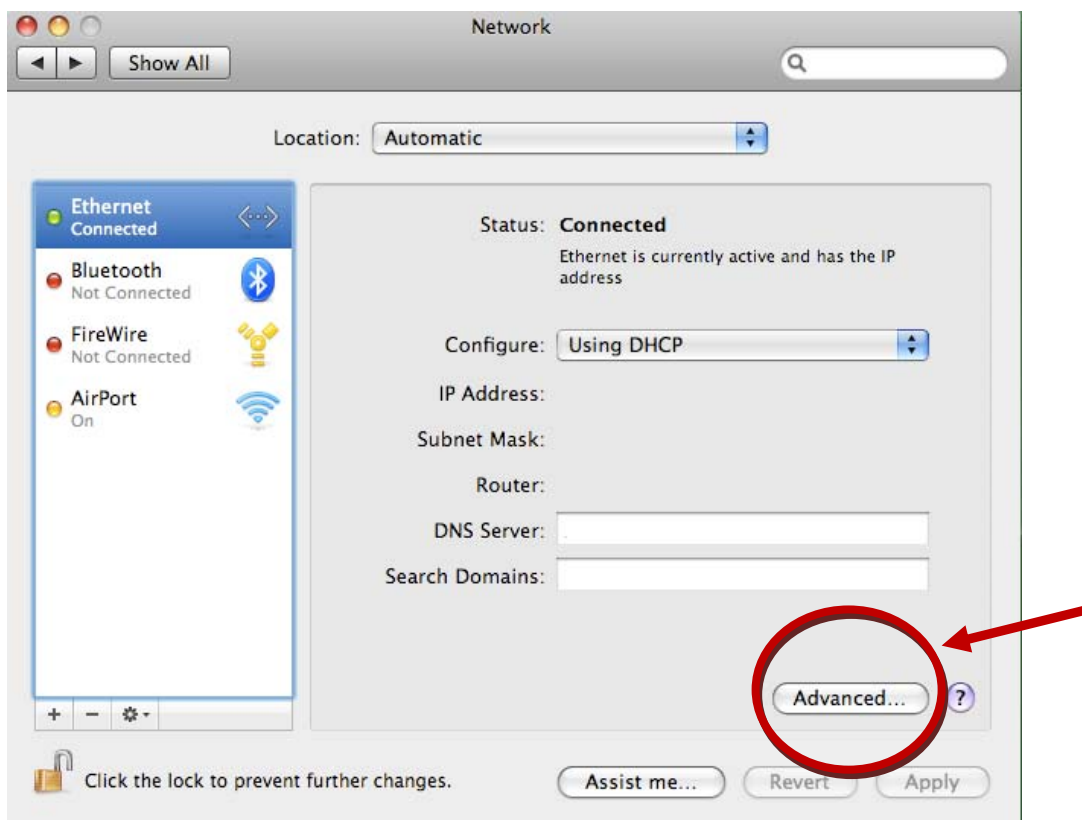


3. A) For new OS X Leopard users, choose Ethernet from the left hand menu
B) For older versions of OS X (OS X Tiger and older), choose Built-in Ethernet on the Show pop-up menu.
4. A) For new OS X users, in the Configure drop-down menu, choose Using DHCP.
B) For older versions of OS X, in the Configure pop-up menu, click on the TCP/IP tab, if necessary. Select Using DHCP in the drop down menu.
5. If you are connected, your screen should look like the following for new OS X users. The Status will display Connected, with Ethernet is currently active and has the IP address 10.x.x.x. You will also see the same IP address 10.x.x.x in the IP Address, with Subnet Mask of 255.255.255.x.

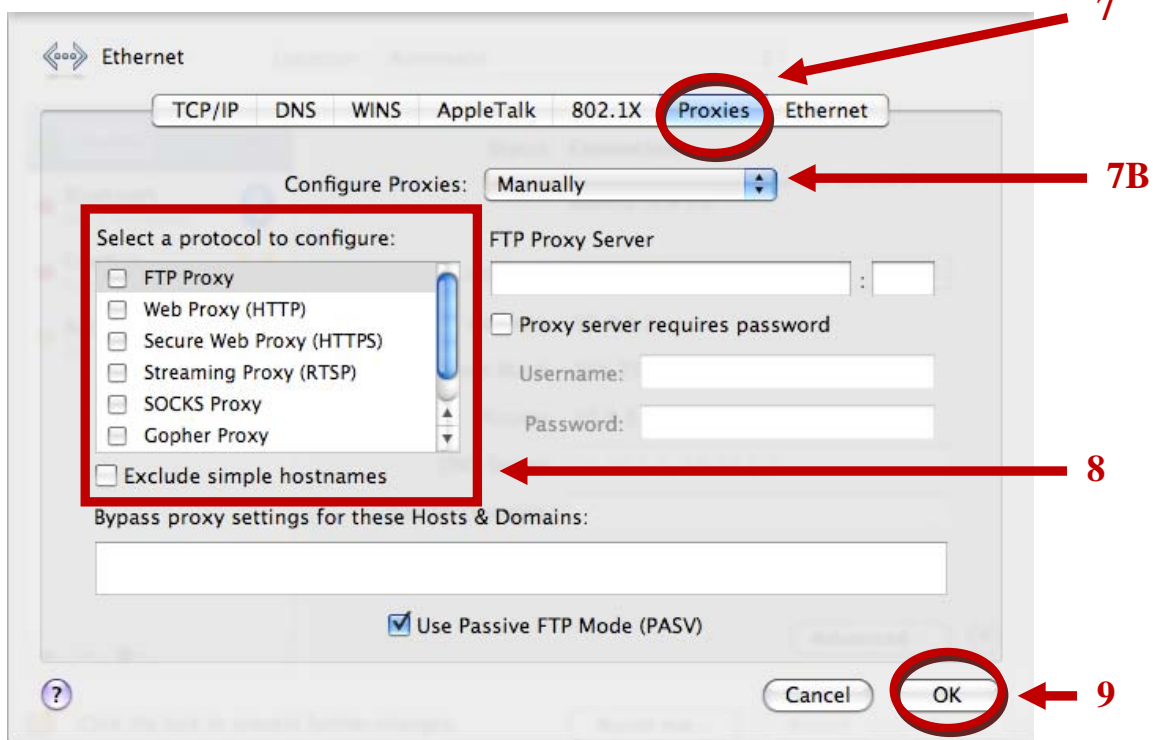


To remove proxy settings

1. Click on the **Advanced...** button.



2. A) Click on the **Proxies** tab, if necessary.
B) In the **Configure Proxies** drop-down menu, select **Manually**.
3. Uncheck all the check boxes for the proxies.



4. Click OK, then Apply.

If you are having problems getting connected please contact our Customer Services Group on customerservice@everywhereinternet.com or by calling 02 9267 6760 and making sure to quote which building your service is in. Please note our telephone support is done on a call back basis only and we only support hardware and software that is provided with the service.

We look forward to putting you on-line!