



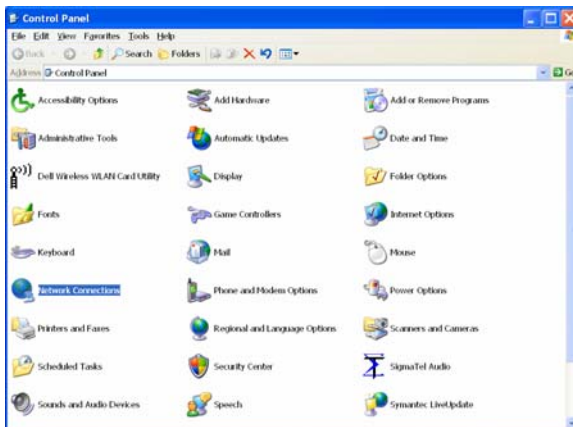
Connecting your computer to the university network in your room

1. You need a network cable to connect your computer to the network. The cable is different from a telephone cable. It is often called CAT5 cable. You have to provide your own cable.
2. Plug in the cable to the socket in your room. Usually it is socket B (the right hand side socket).
3. Configure your computer to get an IP address automatically.
4. Configure your Internet browser (Automatic configuration script settings) to: (preferred settings)
 - Address: <http://www.uow.edu.au/autoproxypac>
5. Configure your Internet browser (the proxy settings) to: eg. MAC's
 - Proxy server: proxy.uow.edu.au
 - Port: 8080
 - Do not use proxy server for: *.uow.edu.au

How to do it on Windows?

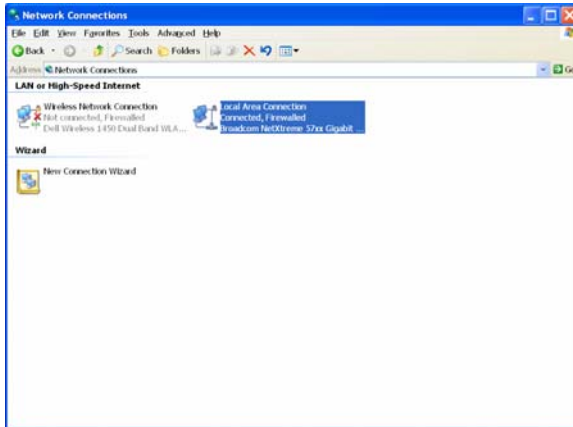
To get an IP address automatically

1. Click on Start → Control Panel → Network connections

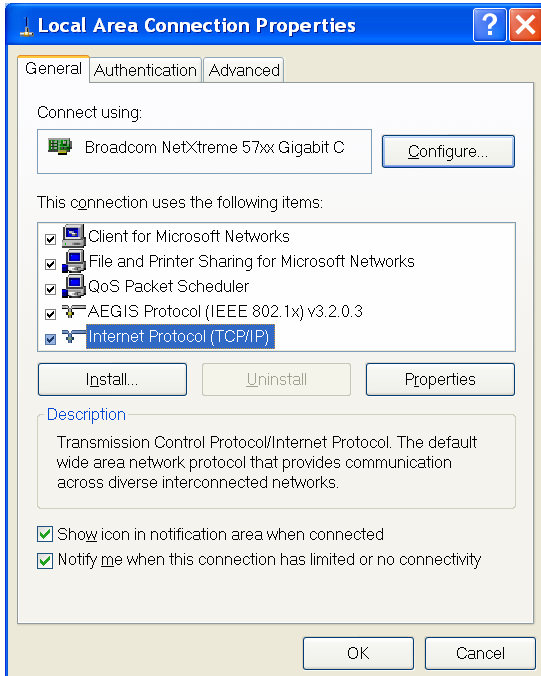




2. Right click Local Area Connection and select Properties

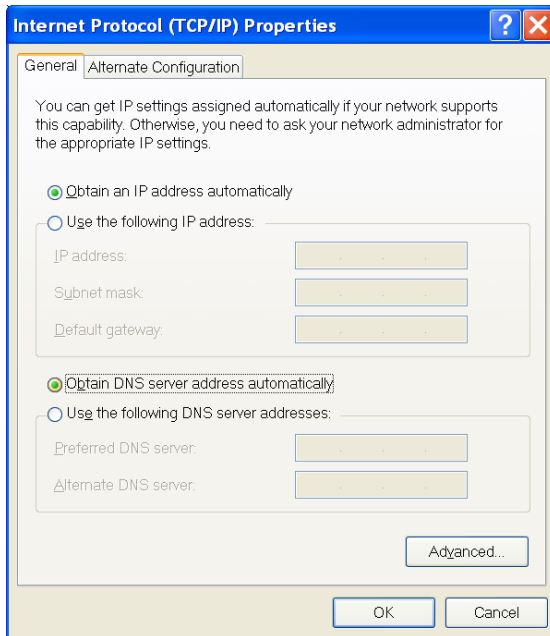


3. Select Internet Protocol (TCP/IP) and click on Properties



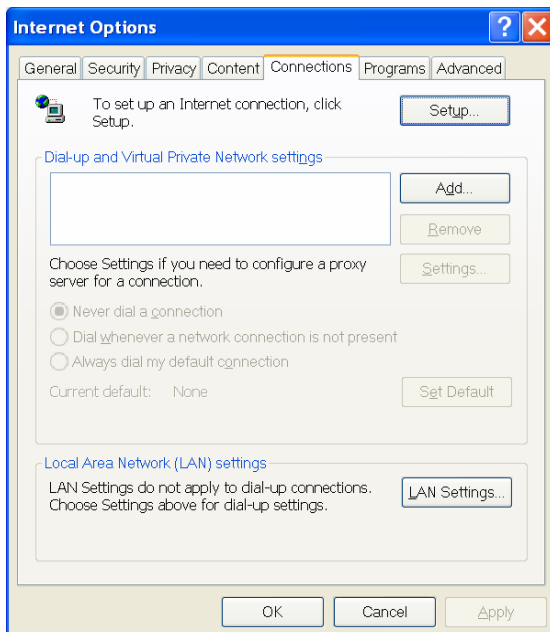


4. Make sure you select “Obtain IP address and DNS server address automatically”.



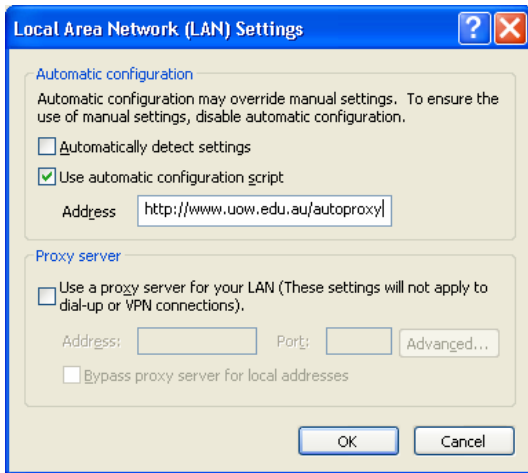
Configuring Internet Explorer

1. Run the Internet Explorer.
2. From the top menu, choose Tools → Internet Options... → Connections tab





3. Click on the “LAN Settings...” button.
4. In the Automatic configuration section,
 - Tick “Use automatic configuration script”.
 - In the address, type: <http://www.uow.edu.au/autoproxy.pac>

**Important notes:**

Always update your Windows by installing patches. Why? Because if your computer is not updated and infected by a virus, ITS will disable the port in your room, so you cannot access the Internet anymore. It could take a long time to re-enable the port again.

Please call the IT support in your college, if you come across any problems to access the university network